

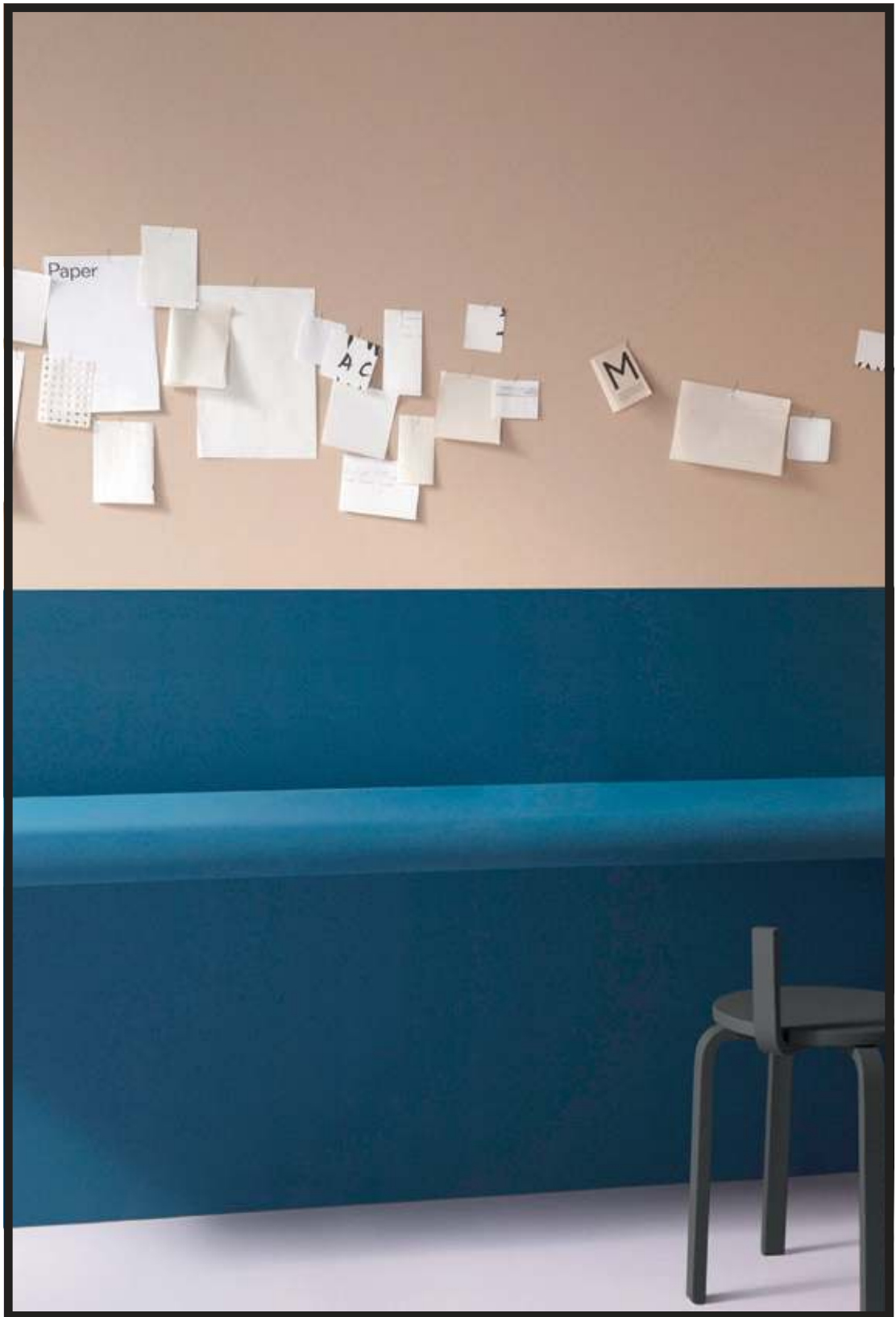


bulletin board®

pinboard linoleum

creating better environments





PINBOARD LINOLEUM

Pinboard linoleum, or Krommenie, offers a practical, simple solution to collect and exchange thoughts and ideas whenever people plan, create and meet. Simply share your thoughts by pinning your idea onto the wall.

Krommenie is an all natural material that can be applied in framed pin boards or directly onto the wall. Its surface is tactile and colourful, creating a decorative element in your space, in addition to being a practical aid in your day to day activity.

THE **ALL NATURAL** SOLUTION
TO HOLD YOUR THOUGHTS

NATURAL & DURABLE

Krommenie is produced from natural and renewable raw materials.

A combination of oxidised linseed oil, rosin and finely ground cork gives the product its flexibility and resilience. This combination results in a product with exceptional durability.

Its strength and resilience make Krommenie the ideal material for pin boards, notice boards and all other surfaces where ideas and information are exchanged. The board material retains its grip and doesn't crumble like traditional soft boards as the pinholes close after extraction of the pins due to the flexibility that characterises the material.



PRACTICAL & HYGIENIC

Krommenie does not attract dust and has bacteriostatic properties. This makes the product a practical solution in classrooms, for the ever changing exhibitions of children's drawings. But also a hygienic solution in healthcare environments where 'get well' messages can be pinned behind the bed.

COLOURFUL INTERIORS

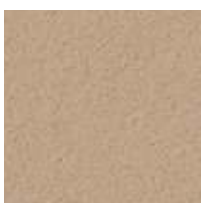
***KROMMENIE is available in an exciting and intense range of 15 colours,
that gives character and atmosphere to its environment.***



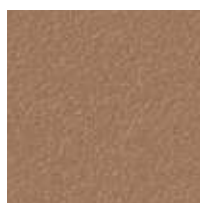
2208 | mushroom medley



2187 | brown rice



2186 | blanched almond *



2166 | nutmeg spice *



2207 | cinnamon bark



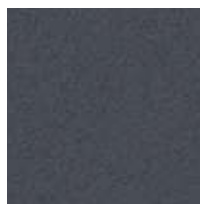
2206 | oyster shell



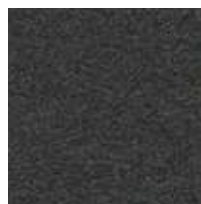
2182 | potato skin *



2162 | duck egg



2204 | poppy seed



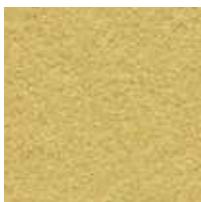
2209 | black olive



2210 | hot salsa



2211 | tangerine zest



2212 | fresh pineapple



2213 | baby lettuce



2214 | blue berry





A penny for
your thoughts



changing
exhibitions



Room for
Ideas



Get well soon

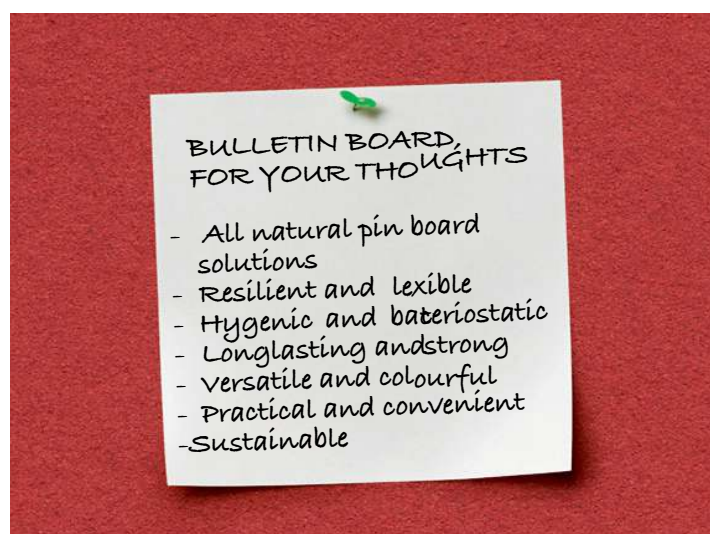


Technical specifications



	Total Thickness	EN-ISO 24346	6.0 mm ± 0.25 mm
	Roll Width	EN-ISO 24341	1.22 m (3 colours in 1.83 m)
	Roll Length	EN-ISO 24341	≤ 28 m
	Total Weight	EN-ISO 23997	4.7 kg/m² ± 10%
	Flexibility	EN-ISO 24344	Ø 50 mm, according to method A
	Sound absorption coefficient	EN-ISO 354	α _w 0.1 (typical)
	Thermal conductivity	EN 12524	0.10 W/m-K
	Reaction to fire	AS/NZ 3837	Group 3 Average extinction rate: 280.3m²/kg
	Self-healing properties	LH000420	yes
	Force on pins - Perpendicular to pin direct	LH000421	25 N (typical)
	Force on pins - Perpendicular to pin at 7 mm	LH000421	10 N (typical)
	Force on pins - Parallel to pin (pulling the pin out)	LH000421	15 N (typical)
	Bacteriostatic properties	EN-ISO 22196	yes
	Chemical resistance	EN-ISO 26987	Resistant to diluted acids, oils and the most conventional solvents such as alcohol, white spirit, etc. Not resistant to prolonged exposure to alkalis.
	Dimension stability		Due to the natural jute back, providing a strong durable foundation, the product is dimensionally stable in all directions when properly installed. It resists cracking, drying and peeling.
	Anti-static		yes
	Gloss		Only available in matt colors, so that reflection caused by sunlight or artificial light is reduced.
	Natural materials (e.g. cork, linseed oil, jute)		91%
	Recycled content		43%
	PVC, PET, plasticizers content		0%

All Forbo Flooring Systems' sales organisations worldwide have a certified Quality Management System in accordance with ISO 9001.
All Forbo Flooring Systems' manufacturing operations have a certified Environmental Management System in accordance with ISO 14001.



whiteboards
and pinboards

1300 344 978

Sales@whiteboardsandpinboards.com.au

www.whiteboardsandpinboards.com.au