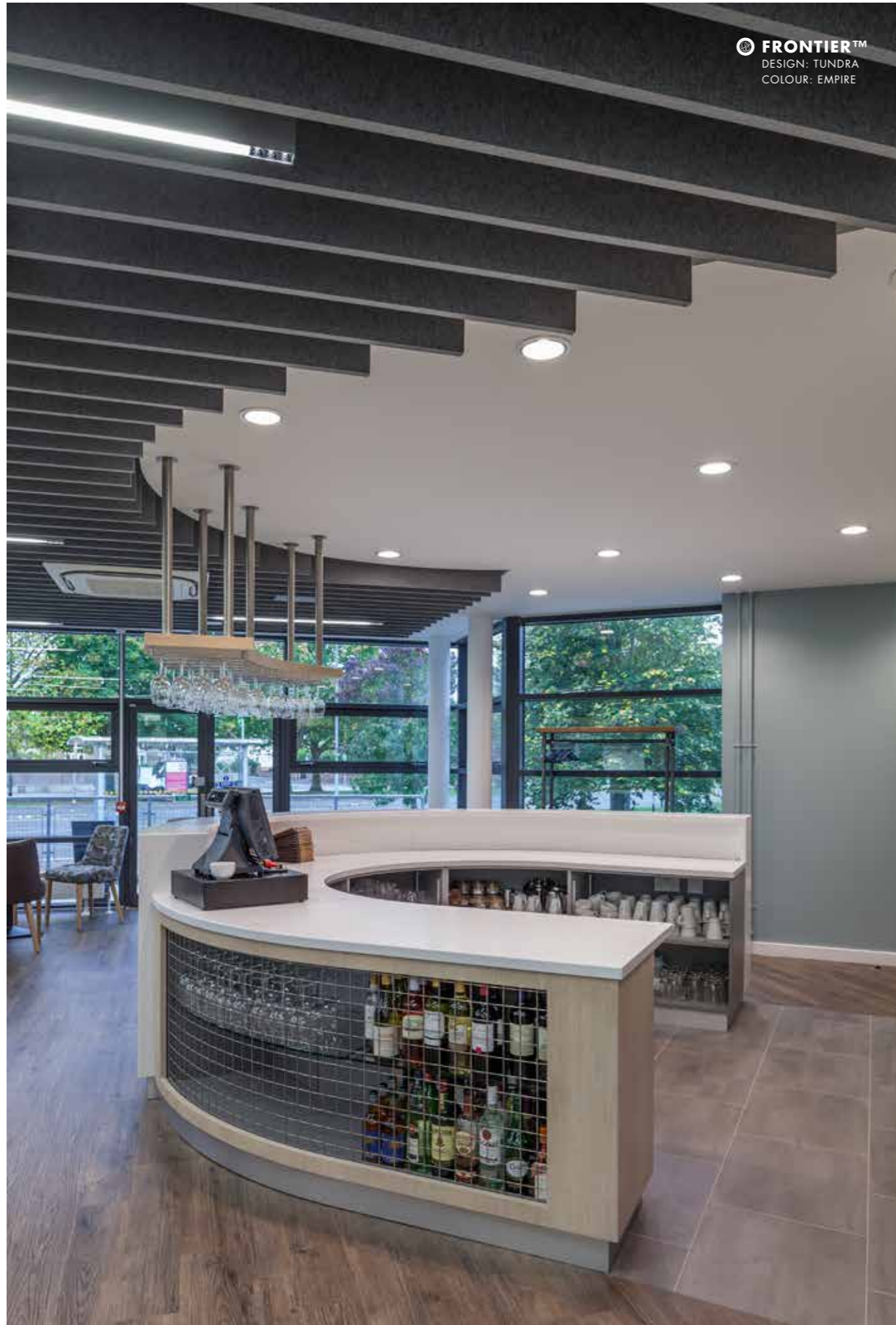


FRONTIER™ ACOUSTIC FINNS



FRONTIER™
DESIGN: TUNDRA
COLOUR: EMPIRE



FRONTIER™ ACOUSTIC FINS

Frontier™ revolutionises what it means to have beautifully designed acoustics. With modular fins that can be arranged and spaced in countless formations, Frontier is available in five styles and is designed for targeted sound absorption for the commercial, education and hospitality sectors. There are 17 colours to choose from which can be mixed and matched to bring the designs to life on walls and ceilings.

Frontier's incredible acoustic performance is thanks to the highly-absorbent, compressed, polyester felt and fins that are fully adjustable both before and after installation. As noise operates at different frequencies, by moving the fins closer and further apart, Frontier can be 'tuned' to create the ultimate space for people to work and play within.

At Autex, we want to provide a seamless install experience, so we've created our own Frontier Kit complete with our internationally patented clip and aluminium channel that allows easy adjustments on site. This also means Frontier can be installed to perfectly fit the designed space without compromise.

If you have an idea for a custom design, let's work together to make it happen. We have an in-house design team dedicated to customisation so we have the capacity to bring your own vision to life.

FRONTIER™

ACOUSTIC FINS

FEATURES AND BENEFITS

- Delivers excellent acoustic performance
- Suitable for wall and ceiling applications
- Supplied in kits including acoustic fins and fixing hardware
- Can be subtle or a feature design for small or large spaces
- Low VOC – beneficial for IEQ
- Not made from fibreglass or mineral fibre and does not contain formaldehyde, crystalline silica or other carcinogens, common to traditional fibrous absorbers
- Cleanable and easily demountable
- Includes high recycled content and is recyclable at the end of its life
- Highly durable so you're assured of long-term stability and performance





FRONTIER™

ACOUSTIC FINNS

APPLICATIONS

- Suitable for offices, education, retail, hospitality and commercial interiors
- Fix or suspend acoustic ceiling and wall system
- Creates breakout zones in large open plan areas
- Hides ceiling services

SPECIFICATION

Acoustic absorption system shall be Frontier () as compiled by Autex www.autexindustries.com

Acoustic absorber Frontier™ fins (2400/custom)mm length x (300mm nominal / Axis 150mm) depth x (12/24) mm gauge, spaced at ()mm centres. Colour (), sound absorption: 100/200mm centres Class B, 300mm centres Class C, Fire Rating ISO 9705: 1993: Group 1-S, AS ISO 9705 – 2003: Group 1, EN13501-1:2007+A1:2009: B - s2, d2, ASTM E-84-15a -12mm: Class A, FS:0 - SD:45.

Supplied with Frontier Connector Clips, Frontier Channel, Frontier Fins. Fix with 6g countersink fastener appropriate for the substrate. Install as per Frontier Install Instructions.

MADE FOR THE **MODERN OFFICE**

The premium sound absorbing nature of Frontier™ creates an acoustically sheltered environment in open-plan offices.

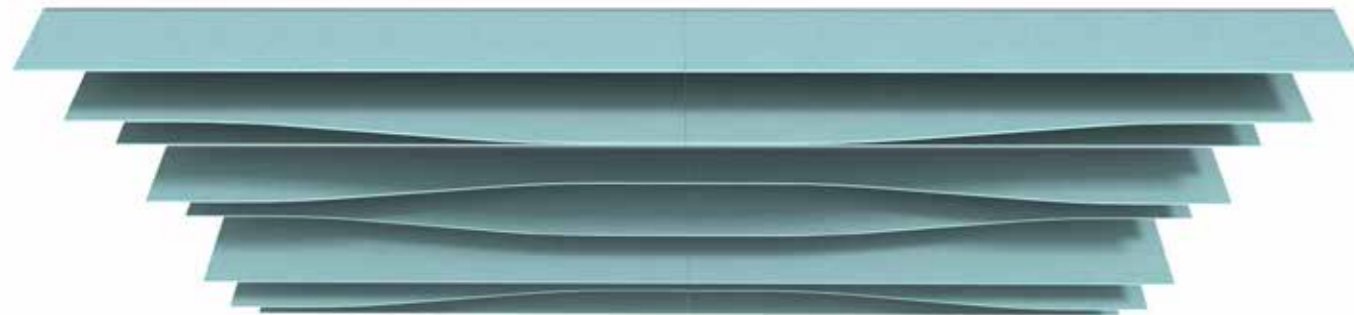


FRONTIER™

STANDARD DESIGNS



DESIGN TUNDRA COLOUR GALAXY - SEE PAGE 19 FOR FULL COLOUR RANGE



DESIGN DUNE COLOUR FALLING WATER - SEE PAGE 19 FOR FULL COLOUR RANGE

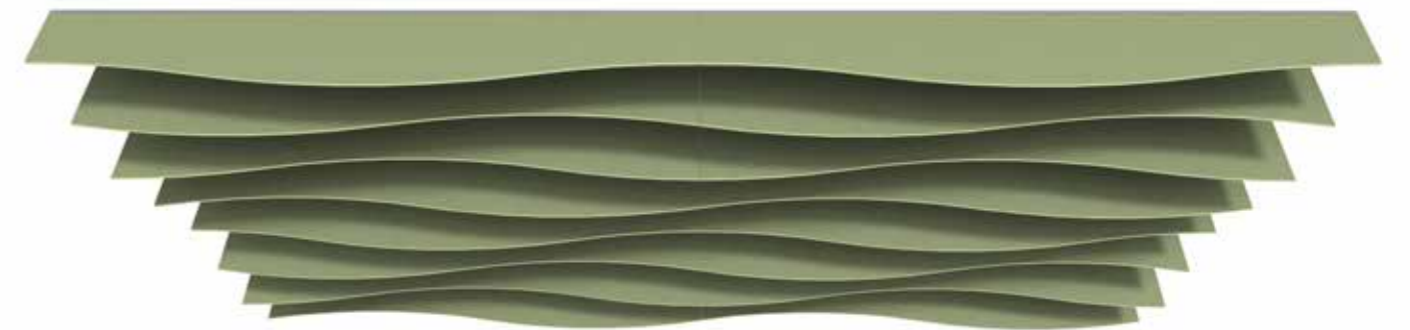
*Images as shown are with 2 packs.

FRONTIER™

STANDARD DESIGNS



DESIGN SIERRA COLOUR LOTUS - SEE PAGE 19 FOR FULL COLOUR RANGE



DESIGN TALUS COLOUR ACROSS - SEE PAGE 19 FOR FULL COLOUR RANGE

*Images as shown are with 2 packs.

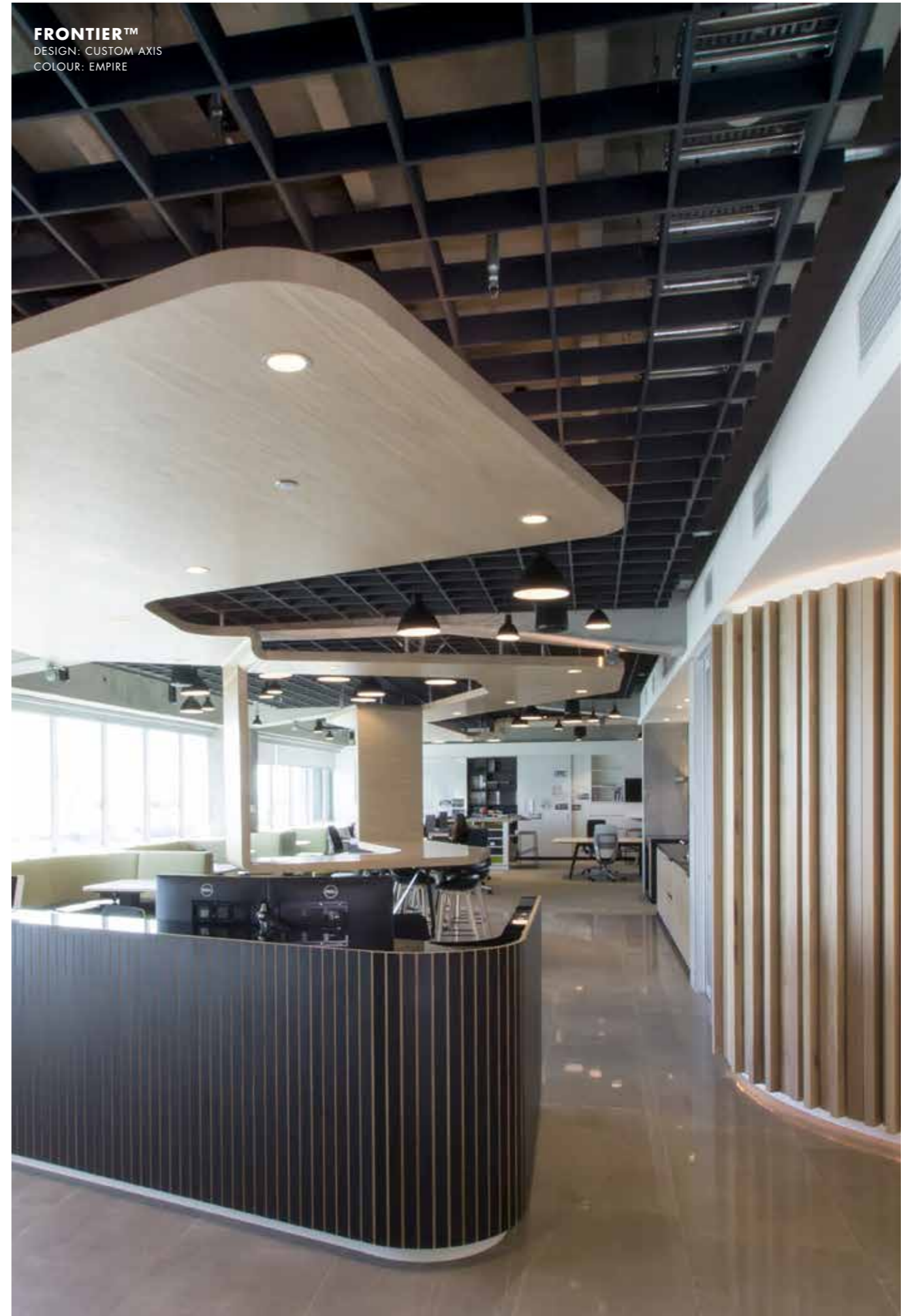
FRONTIER™

STANDARD DESIGNS



DESIGN AXIS (12MM ONLY) **COLOUR** SAVOYE - SEE PAGE 19 FOR FULL COLOUR RANGE

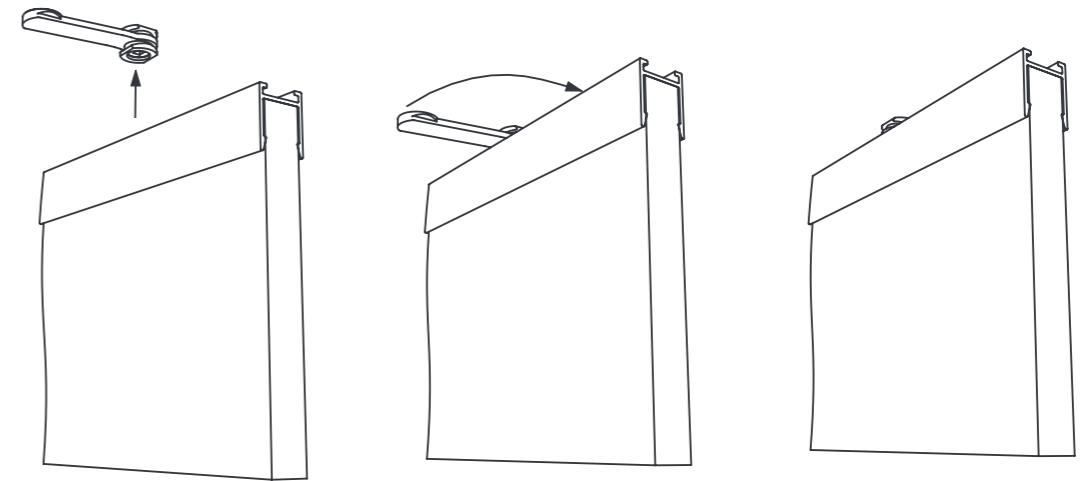
*Images as shown are with 2 packs.





FRONTIER™

CHANNEL AND CONNECTOR SYSTEM



With Frontier™ Connector perpendicular to the channel, snap channel onto Connector.
Once the position is confirmed, rotate Connector 90 degrees to lock.

PATENT

US 10,113,312

PATENT PENDING

NZ 725770 | AU 2016250499 | GB 1618397.2

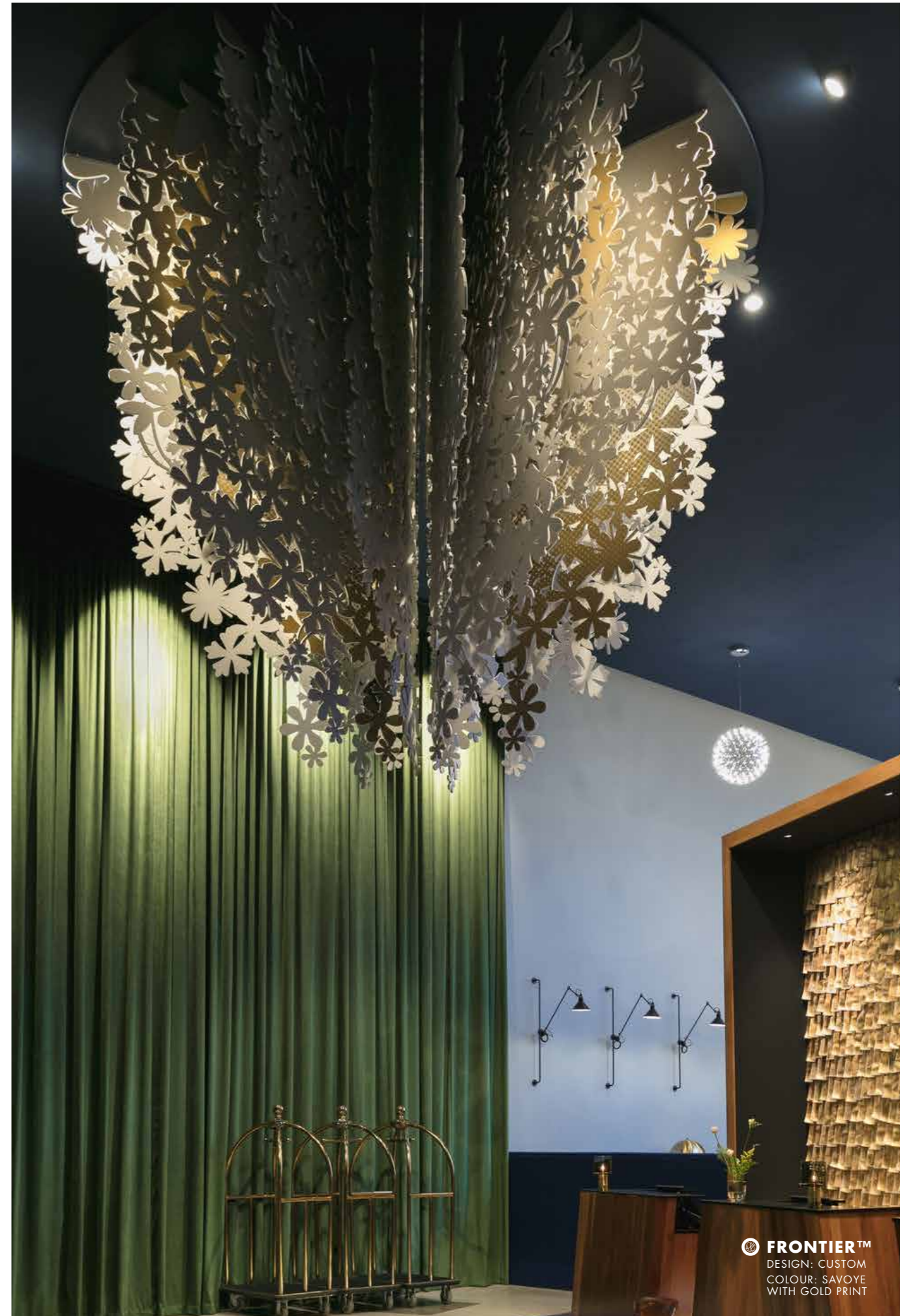
FRONTIER™ ACOUSTIC FINES

CUSTOMISATION

We know that no two projects are exactly the same, so why should the products or services going into them be? This is why we are proud of our ability to customise any of our products to suit your needs.

Being manufacturers, engineers and creatives, we have the capacity to transform, cut, mould, or build our products to create acoustic solutions truly unique to you and your space.

If you have an idea, let's work together to make it happen. If you want to customise Frontier™ for your next project, get in touch with your Autex account manager or visit our website www.autexindustries.com/contact-us



FRONTIER™
DESIGN: CUSTOM
COLOUR: SAVOYE
WITH GOLD PRINT

FRONTIER™
DESIGN: CUSTOM
COLOUR: FLATIRON

UNIQUE DESIGN

Work with us to create a bespoke Frontier
that enhances your next project.



FRONTIER™
DESIGN: TALUS
COLOUR: SENADO,
SAVOYE AND EMPIRE



COLOUR OPTIONS

IRONBANK	ZENITH	SENADO
ROSADA	OPERA	ACROS
TREE HOUSE	LOTUS	BOSCO
PINNACLE	GALAXY	FALLING WATER
EMPIRE	FLATIRON	SAVOYE
PETRONAS	PAVILION	

ABSORPTION COEFFICIENT ACCORDING TO ISO 354

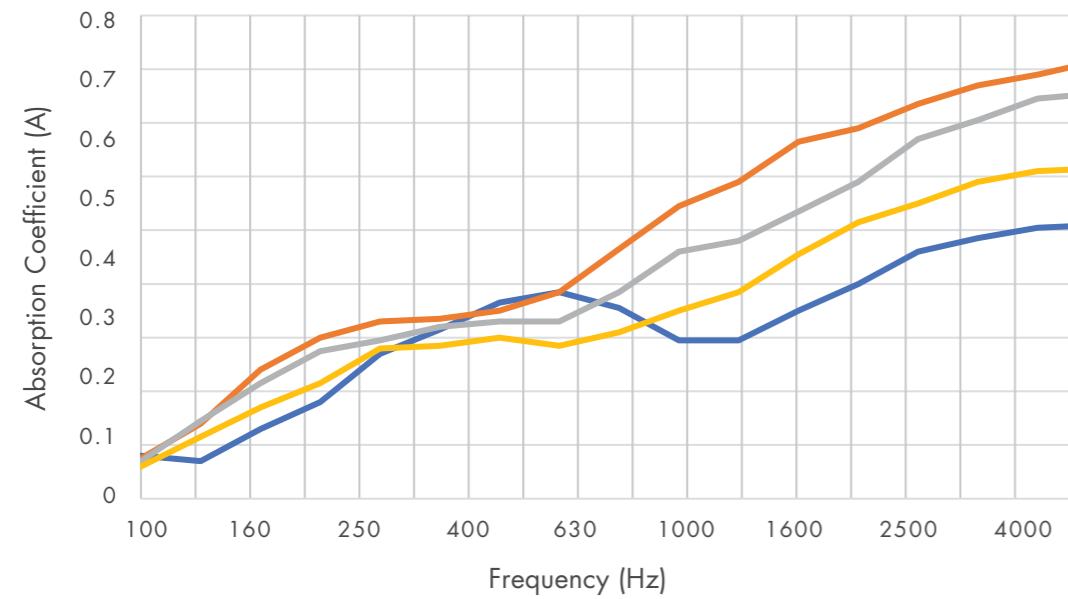


Table presents the practical sound absorption coefficients as according to ISO 11654. Graph presents third octave sound absorption coefficients (According to ISO 354 Measurement of sound absorption in a reverberation room.) The NRC rating is determined as the arithmetic average of the absorption coefficients measured by one-third octave bands centred on 250 Hz, 500 Hz, 1000 Hz and 2000 Hz, and rounded to the nearest 0.05.

DESCRIPTION	University of Auckland Test report number	FREQUENCY (Hz)							NRC
		125	250	500	1000	2000	4000		
Frontier™ Axis 12mm 150mm deep 300mm centres	T1525-11	0.20	0.50	0.75	0.65	0.90	1.05	0.70	
Frontier™ 12mm 300mm deep 100mm spacing's	T1525-18	0.30	0.65	0.80	1.20	1.45	1.60	1.00	
Frontier™ 12mm 300mm deep 200mm spacing's	T1525-16	0.30	0.60	0.70	1.00	1.30	1.50	0.90	
Frontier™ 12mm 300mm deep 300mm spacing's	T1525-17	0.25	0.50	0.60	0.80	1.10	1.25	0.75	

PRODUCT SPECIFICATIONS

Product Name	Frontier™
Composition	Fin: 100% Polyester Fibre (PET) Aluminium Channel
Dimensions	Fin Length: 2400mm (+0.5mm)
Thickness	12mm
Tolerance	(+/-6%)
Weight	2300 GSM

ACOUSTIC PERFORMANCE

Frontier™ is specifically designed to reduce and control reverberated noise (echo) in building interiors.

INSTALLATION

Install as per Autex recommendations. Install instructions are included in each pack or available on the website.





LIGHT REFLECTANCE VALUES BY COLOUR

Pavilion	78	Zenith	22
Opera	49	Lotus	16
Savoye	47	Galaxy	16
Senado	45	Iron Bank	13
Rosada	45	Pinnacle	8
Acros	42	Empire	6
Falling Water	36	Tree House	3
Bosco	29	Petronas	2
Flatiron	25		

MEASURED IN ACCORDANCE WITH BS 8493:2008+A1:2010

FIRE RATING

Frontier™ is a value-added product made from Autex Cube™ as the base material. Cube™ has been evaluated using the following test methods:

ISO 9705: 1993

Classification: Group 1-S
Smoke Production Rate: <5.0m²/s
As required by NZBC C/VM2

AS ISO 9705 - 2003

Classification: Group 1
(SMOGRArc): <100m²/s²
Assessed using methodology AS ISO 9705:2003 in accordance with AS 5637.1:2015, as required by BCA Specification C1.10-4 FI 4974 dated 16th September, 2012 and FAR 4055-2 dated 8th October, 2013

EN13501-1:2007+A1:2009

B - s2, d2 (Cube™ 12mm)
WF336911 dated 25th February 2014

ASTM E-84-15a

Class A, FS:0 - SD:45 (Cube™ 1/2")
RJ4479-2 dated 25th January, 2016

Class A, FS:0 - SD:65 (Cube™ 1")

RJ4479-1 dated 25th January, 2016

VOC EMISSIONS

Autex polyester has been tested for chemical emissions in accordance with ASTM D5116 and is considered as a low VOC product.
VOC concentration: 0.009 mg/m³ (7 days).

WATER VAPOUR SORPTION

ASTM C1104 / C1104M-13a
Test conditions: 49°C, 95%RH
Water vapour absorbed and adsorbed after 4 days:
0.4% by weight.

MICROBIAL RESISTANCE

ASTM G21-15
Growth Rating: 0 (No growth)
Frontier™ does not promote the growth of mould and mildew.

COLOUR FASTNESS TO LIGHT

Frontier™ is suitable for indoor use only.
Light fastness is dependent on use and exposure.
Frontier™ has been evaluated to the following standard:
ISO 105-B02:2014
Rating: 6 (Highest = 7)

COLOUR FASTNESS TO RUBBING

ISO 105-X12:2016
Dry Rating: 4-5 (Highest = 5)
Wet Rating: 4-5 (Highest = 5)

PATTERN REPEAT

Non-woven. No pattern repeat but product has directional grain. Product may vary from samples and batch to batch due to fibre blending and lay-up which is an inherent feature of this product.

FABRIC CARE

Blot spills from fabric quickly. Wipe with a damp cloth. Avoid rubbing and excessive amounts of water as this will affect the finish. Use carpet or upholstery shampoo as directed. Blot with a clean dry cloth after each application of solution.

Custom printed Cube require the services of a specialist cleaning company. Refer to the Frontier™ Cleaning and Maintenance Guide for more information.

ENVIRONMENTAL

Autex is committed to best practice through our ISO 9001 and ISO 14001 certified Quality and Environmental Management Systems.

Autex Frontier™ contains a minimum of 45% recycled polyester fibre (from PET bottle-flake). Off-cuts and manufacturing waste is re-used or recycled wherever possible.

Autex Frontier™ is manufactured from 100% polyester fibres and do not contain formaldehyde binders. Autex polyester fibres support safer indoor air quality and will not become a potential airborne pollutant.

SERVICE

For further information about Frontier™, Autex Cube™ or any other product, please contact your Autex account manager or visit our website.

ABSORPTION COEFFICIENT ACCORDING TO ISO 354

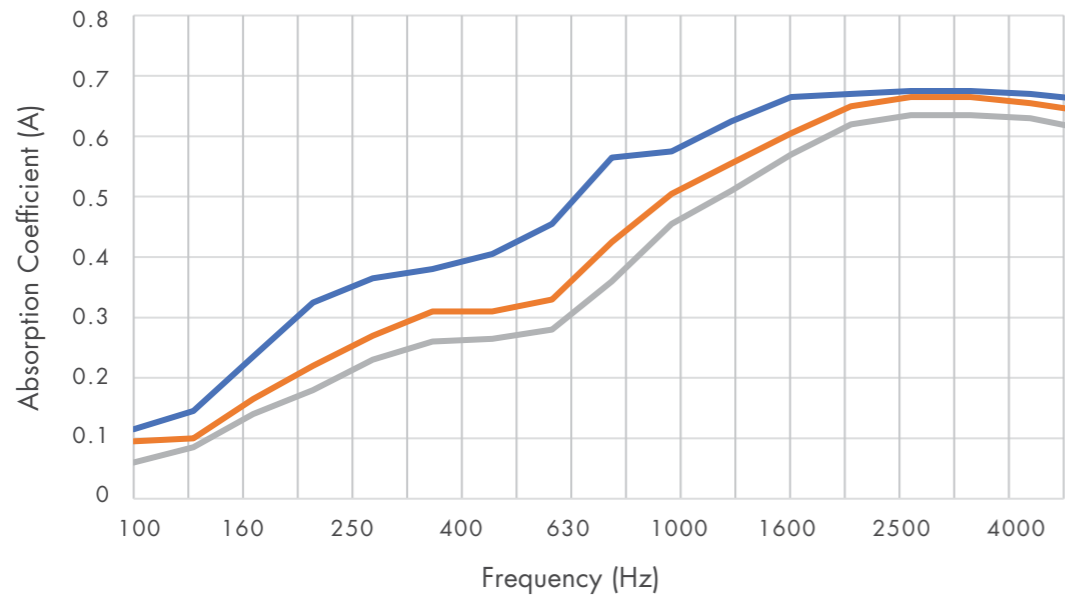


Table presents the practical sound absorption coefficients as according to ISO 11654. Graph presents third octave sound absorption coefficients (According to ISO 354 Measurement of sound absorption in a reverberation room.) The NRC rating is determined as the arithmetic average of the absorption coefficients measured by one-third octave bands centred on 250 Hz, 500 Hz, 1000 Hz and 2000 Hz, and rounded to the nearest 0.05.

DESCRIPTION	University of Auckland Test report number	FREQUENCY (Hz)							NRC
		125	250	500	1000	2000	4000		
Frontier™ 24mm 300mm deep 100mm spacing's	T1812-4	0.35	0.70	0.95	1.25	1.35	1.30	1.05	
Frontier™ 24mm 300mm deep 200mm spacing's	T1812-5	0.25	0.55	0.70	1.10	1.30	1.30	0.90	
Frontier™ 24mm 300mm deep 300mm spacing's	T1812-6	0.20	0.45	0.60	1.00	1.25	1.20	0.85	

PRODUCT SPECIFICATIONS

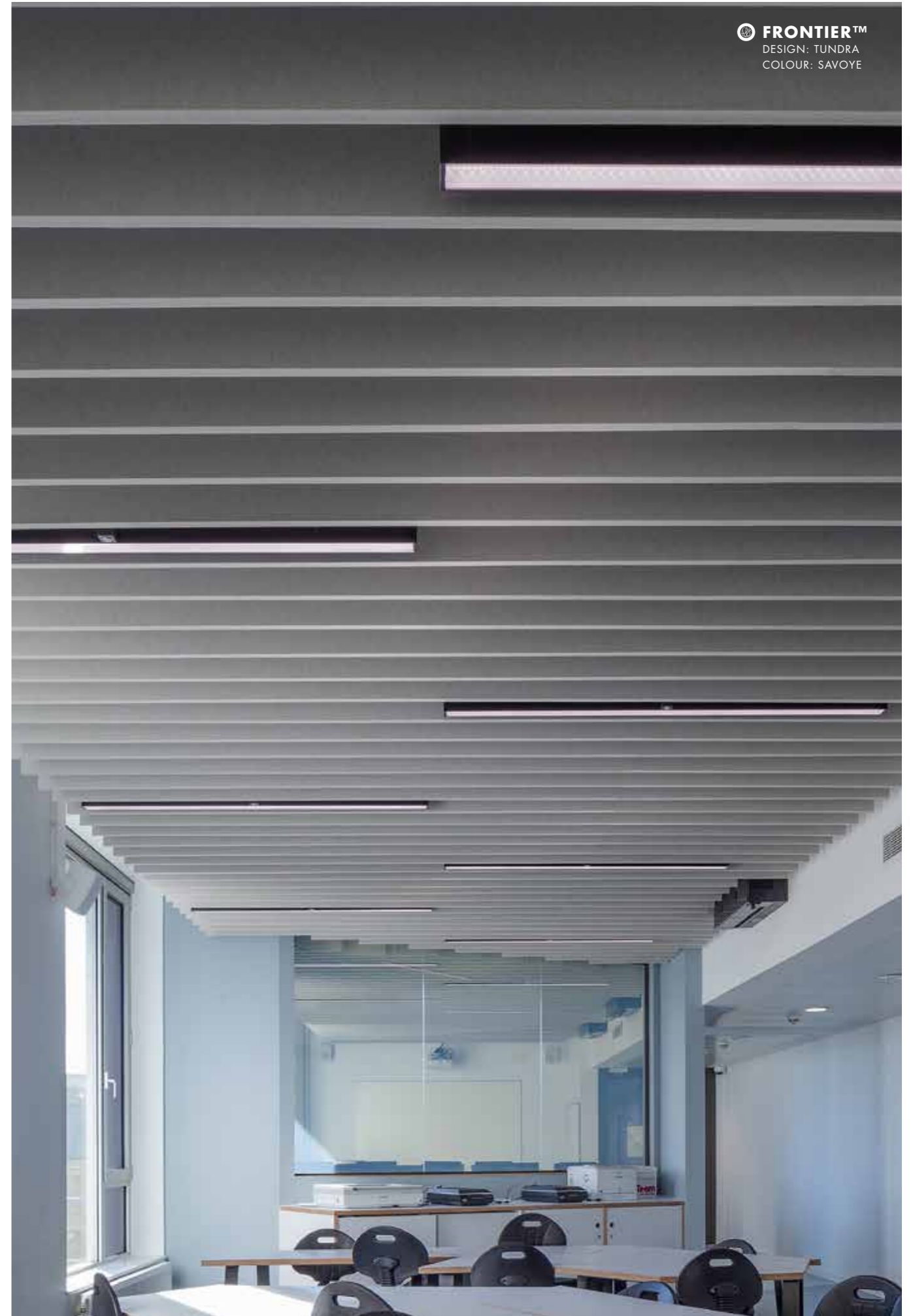
Product Name Frontier™
 Composition Fin: 100% Polyester Fibre (PET) Aluminium Channel
 Fin Length 2400mm
 Tolerance (+/-0.5mm)
 Thickness 24mm
 Tolerance (+/-6%)
 Weight 4600 GSM

ACOUSTIC PERFORMANCE

Frontier™ is specifically designed to reduce and control reverberated noise (echo) in building interiors.

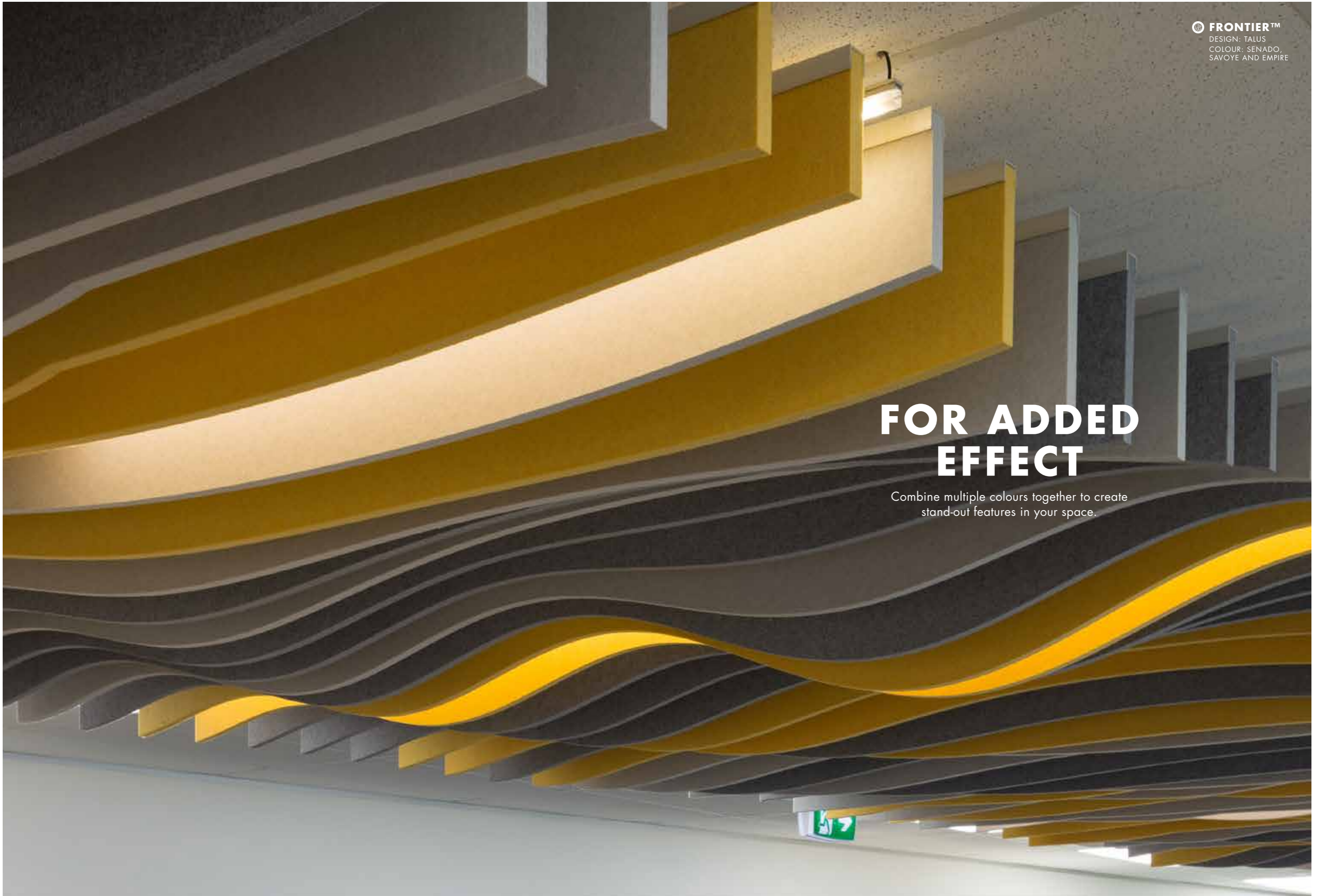
INSTALLATION

Install as per Autex recommendations. Install instructions are included in each pack or available on the website.



FOR ADDED EFFECT

Combine multiple colours together to create stand-out features in your space.





CARING FOR THE ENVIRONMENT

Frontier™ is manufactured using 100% polyester fibre and contains a minimum of 45% previously recycled fibre (from PET plastics). Our products are designed to be recycled at the end of their life too.

We use Life Cycle Analysis (LCA) to understand the environmental impacts of our products and set targets to reduce these. All our products have been verified as low VOC and are free from chemical binders making them great for indoor environmental quality (IEQ).

We have continual improvement programmes in which we implement a range of initiatives to mitigate the environmental 'hotspots' that we have identified. Our products are GreenRate Level A, LCARate Gold and PHD level platinum certified. Frontier™ is made from Cube™ which is Declare_{SM} certified to be Red List free and can be used in Living Building Challenge projects.

Autex has a high functioning Environmental Management System (ISO 14001) to enhance our environmental performance and contribute to sustainable development.



Declare.



whiteboards
and pinboards

1300 344 978
Sales@whiteboardsandpinboards.com.au
www.whiteboardsandpinboards.com.au

