

---

# ECHOPANEL® COLLECTION





# CONTENTS

<b>ECHOPANEL® COLLECTION</b> .....	<b>01</b>
ENVIRONMENTAL STORY .....	03
COLOUR STORY .....	05
<b>ECHOPANEL® PALETTE</b> .....	<b>06</b>
SPECIFICATIONS & PERFORMANCE .....	07
<b>PRECISION CUT DESIGNS</b> .....	<b>08</b>
<b>ECHOPANEL® ALIGN</b> .....	<b>09</b>
<b>ECHOPANEL® OHM</b> .....	<b>10</b>
<b>ECHOPANEL® PALACE</b> .....	<b>11</b>
<b>ECHOPANEL® EMPIRE</b> .....	<b>12</b>
<b>ECHOPANEL® LATITUDE</b> .....	<b>13</b>
<b>ECHOPANEL® LONGITUDE</b> .....	<b>14</b>
<b>ECHOPANEL® MERIDIAN</b> .....	<b>15</b>
<b>PRINT DESIGNS</b> .....	<b>16</b>
<b>ECHOPANEL® ASTRO</b> .....	<b>17</b>
<b>ECHOPANEL® FREQUENCY</b> .....	<b>18</b>
<b>ECHOPANEL® HEX</b> .....	<b>19</b>
<b>ECHOPANEL® TILT</b> .....	<b>20</b>
<b>ECHOPANEL® TRAPEZE</b> .....	<b>21</b>
<b>ECHOPANEL® TRIO</b> .....	<b>22</b>
<b>PRODUCT PORTFOLIO</b> .....	<b>23</b>
<b>ARRAY CEILING SOLUTION</b> .....	<b>24</b>
<b>ECHOPANEL® ELEMENT</b> .....	<b>25</b>
<b>PENDENTS &amp; SCREENS</b> .....	<b>26</b>
<b>ACOUSTIC TILES</b> .....	<b>27</b>
<b>ECHOPANEL® ADAPT</b> .....	<b>28</b>



# ECHOPANEL® COLLECTION

Invented and launched by Woven Image in 2004, EchoPanel® is the original decorative interior panelling solution, with acoustic qualities and eco-innovation at its core.

EchoPanel® reduces and controls reverberated noise in shared environments, making it ideal for use in a variety of commercial interior spaces including workplace, education and hospitality environments.

It is a streamlined product with a fabric-like finish, designed with dematerialisation in mind. Once it has been installed, there is no need to upholster, paint or protect it.

Pioneering the war against single-use plastic, EchoPanel® production uses post-consumer recycled PET bottles to create a superior upcycled product with a vast array of interior applications.

## EXTENSIVE PRODUCT RANGE

EchoPanel® offers the largest colour palette on the market. The solid colour remains consistent throughout the thickness of the panel, so you can cut, create and install without the need for edging or capping.

EchoPanel® also boasts an extensive range of inspiring prints and precision cut designs, making it the go-to brand for creative Architects and Interior Designers.

Offered in 3 panel thicknesses; 7mm, 12mm and 24mm. Panel sizes are 2800mm x 1200mm<sup>1</sup>, allowing for a seamless floor-to-ceiling application.

## APPLICATIONS

EchoPanel® is durable, lightweight, and easy to cut and install, making it ideal for a multitude of wall, ceiling and free-standing interior applications. Frequent installations include:

- Wall panelling: direct fix installation or create an air gap for greater acoustic performance.
- Feature wall tiling<sup>2</sup>.

- Ceiling applications: direct fix, suspended systems or baffles.
- Workstations: its slender, pinnable nature enables it to be used as a double-sided division in a workstation.
- Free-standing partitioning systems<sup>2</sup>: ideal in the 24mm thickness.
- Hanging pendants<sup>2</sup>: for dividing a space with privacy and acoustic control.

In-house design for custom printing and precision cutting projects, offers endless possibilities when it comes to creating a bespoke designer look.

## ACOUSTIC CONTROL

Controlling reverberated noise is a crucial factor in creating comfortable and productive environments, be it a professional workplace, learning environment, social setting or retail space.

EchoPanel® is optimised for acoustic performance and has been independently tested, in accordance with AS ISO 354: 2006 (R2016). Sound performance indices have been calculated in accordance with AS ISO 11654: 2002 (2016), with NRC and SAA defined by ASTM C423 - 17.

## DESIGNED FOR COMMERCIAL INTERIORS

EchoPanel® has undergone many forms of industry testing and complies with some of the world's highest mandatory standards.

Its fire-retardant properties have been developed so that it is an excellent performer in the safety arena. It holds first-class ratings in Australasian and International markets, achieving a Group 1 rating in the 'ISO 9705' full-scale room fire test. EchoPanel® 12mm has also been awarded a valuable 'GB 8624 B1 level', and the internationally recognised 'BS EN 13501.1: Classification B - s1, d0'.

<sup>1</sup> Manufacturing tolerances apply

<sup>2</sup> Visit [wovenimage.com](http://wovenimage.com)





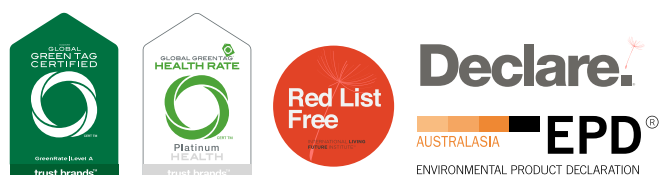


# ENVIRONMENTAL STORY

Dematerialisation, recycling, upcycling and life cycle management were, and still are, at the foundation of EchoPanel® design.

EchoPanel® products are dedicated to the environment, aside from saving tonnes of plastic waste from our oceans and landfill, the PET is converted into EchoPanel® which boasts a 10-year life expectancy, after which the material is still 100% recyclable.

EchoPanel® is only printed with environmentally sensitive pigment inks to deliver excellent light fastness while remaining low-VOC, non-flammable and non-toxic.



## ENVIRONMENTAL CERTIFICATION

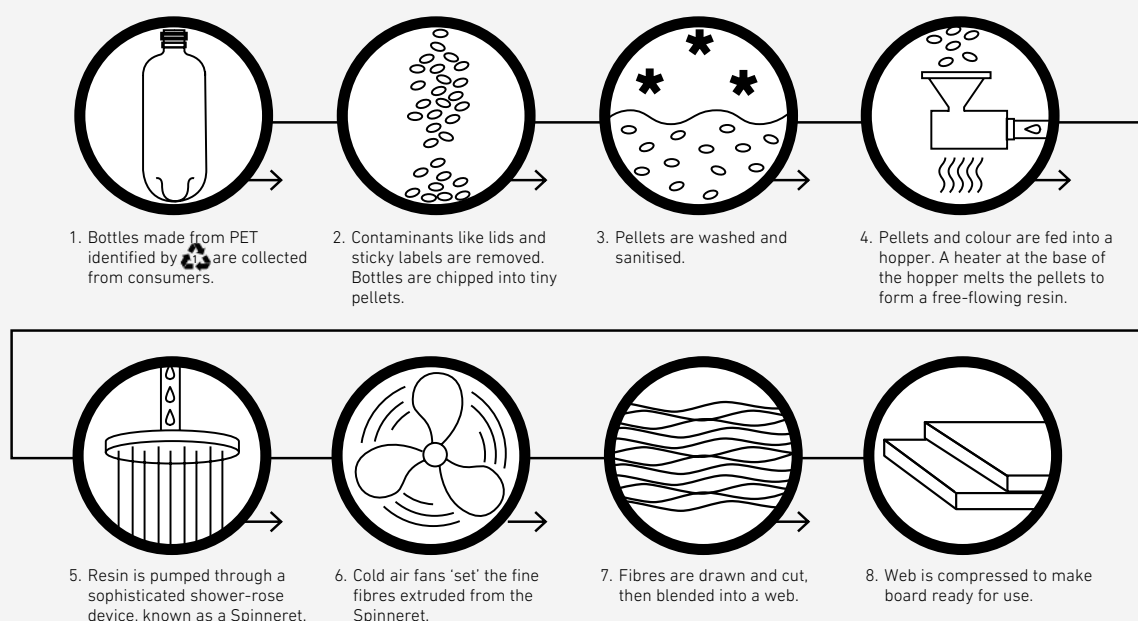
EchoPanel® achieves Global GreenTag™ certification (Green Rate Level A) with the maximum Product Health Declaration™: Platinum Health for EchoPanel® plain colours<sup>3</sup>. It is Red List Free and has published ingredient transparency with Declare.

Furthermore, EchoPanel® can secure credits under the following sustainable building rating tools:

- Green Star, as administered by Green Building Council Australia.
- WELL™ Building Standard, International WELL Building Institute.
- Leadership in Energy and Environmental Design (LEED v4.1).

EchoPanel® acoustic quality, along with its extensive colour, design and customisation properties, offers designers the freedom to create stylish, unique and sustainable interior spaces.

## MANUFACTURING PROCESS OF ECHOPANEL®



<sup>3</sup> Visit [wovenimage.com](http://wovenimage.com) for further information, or a copy of our full Environmental Product Declaration





# COLOUR STORY



EchoPanel® is available in a comprehensive range of neutral, mid tone and vibrant colours. Due to its unique manufacturing process, the colour remains consistent throughout the depth of the panel.

The standard 12mm range includes all 33 colours, with a selection of these colours also available in 7mm and 24mm thickness.

Colours shown are for reference only, please contact your local Woven Image representative for a sample prior to ordering.

ECHOPANEL® PALETTE

500

101

908

454

468

447

442

444

402

580

550

542

276

576

274

269

193

167

295

487

384

579

381

108

124

330

349

338

325

365

660

633

551

QUICK REFERENCE GUIDE

PANEL DIMENSIONS

7mm x 1200mm x 2800mm  
0.28" x 47.24" x 110.24"

12mm x 1200mm x 2800mm  
0.47" x 47.24" x 110.24"

24mm x 1200mm x 2800mm  
0.94" x 47.24" x 110.24"

101 108 124 167 193 269 274 276 295 325 330 338 349 365 381 384 402 442 444 447 454 468 487 500 542 550 551 576 579 580 633 660 908

7mm

12mm

24mm



# ECHOPANEL® COLLECTION

## SPECIFICATIONS

PRODUCT	ECHOPANEL® 7mm	ECHOPANEL® 12mm	ECHOPANEL® 24mm
COMPOSITION	100% PET (60% post-consumer recycled)	100% PET (60% post-consumer recycled)	100% PET (60% post-consumer recycled)
WEIGHT	4.7kg	8kg	10kg
THICKNESS	7mm (+/- 7%)	12mm (+/- 7%)	24mm (+/- 7%)
PANEL DIMENSIONS	2800mm (+/- 10mm) x 1200mm (+/- 5mm)	2800mm (+/- 10mm) x 1200mm (+/- 5mm)	2800mm (+/- 10mm) x 1200mm (+/- 5mm)

## PERFORMANCE

COLOUR FASTNESS TO LIGHT	ISO 105 B02: Rating 6 - 7	ISO 105 B02: Rating 6 - 7	ISO 105 B02: Rating 6 - 7
FIRE TEST	ISO 9705: Group 1, AS 1530.3, BS 476: Class 2	ISO 9705: Group 1, AS 1530.3, GB 8624 B1, BS EN 13501.1: Classification B - s1, d0	ISO 9705: Group 1 ASTM E84 Unadhered: Class 2 or B BS EN 13501.1: Classification B - s1, d0 BS EN 45545-2 + A1 Annex C: CIT: 0.00
SOUND ABSORPTION	AS ISO 354: 2006 (R2016) (direct fix results) $\alpha_w$ : 0.20 (H) NRC: 0.25 SAA: 0.24 Class: E	AS ISO 354: 2006 (R2016) (direct fix results) $\alpha_w$ : 0.30 (MH) NRC: 0.45 SAA: 0.43 Class: D	AS ISO 354: 2006 (R2016) (direct fix results) $\alpha_w$ : 0.45 (MH) NRC: 0.65 SAA: 0.63 Class: D
FLEXURAL PROPERTIES		ISO 1209 - 1: 2007 @20mm Deflection Direction 1 = 37.3N, Direction 2 = 39.1N	ISO 1209 - 1: 2007 @20mm Deflection Direction 1 = 39.7N, Direction 2 = 39.8N
VOC EMISSIONS (ECHOPANEL® unprinted)	ASTM D5116: TVOC Emissions Rate: <0.02mg/m <sup>2</sup> /hr (7 days), and CDPH Standard Method v1.2: TVOC Emissions Rate: <0.054mg/m <sup>3</sup> ; Formaldehyde Emissions Rate: <2µg/m <sup>3</sup>	ASTM D5116: TVOC Emissions Rate: <0.02mg/m <sup>2</sup> /hr (7 days), and CDPH Standard Method v1.2: TVOC Emissions Rate: <0.054mg/m <sup>3</sup> ; Formaldehyde Emissions Rate: <2µg/m <sup>3</sup>	ASTM D5116: TVOC Emissions Rate: <0.02mg/m <sup>2</sup> /hr (7 days), and CDPH Standard Method v1.2: TVOC Emissions Rate: <0.054mg/m <sup>3</sup> ; Formaldehyde Emissions Rate: <2µg/m <sup>3</sup>
VOC EMISSIONS (ECHOPANEL® printed)		ASTM D5116: TVOC Emissions Rate: <0.093mg/m <sup>2</sup> /hr (7 days)	



# PRECISION CUT DESIGNS





PRECISION CUT DESIGNS

# ECHOPANEL® ALIGN



EchoPanel® ALIGN in colour 349

## COLOURS

Full EchoPanel® 12mm & 24mm colour range - see page 6

## PANEL DIMENSIONS

2750mm (+/- 2mm) x 1180mm (+/- 2mm)

## PANEL THICKNESS

12mm | 0.47"

24mm | 0.94"

For additional specifications and performance details please visit [wovenimage.com](http://wovenimage.com)

PRECISION CUT DESIGNS

# ECHOPANEL® OHM



EchoPanel® OHM in colour 454

## COLOURS

Full EchoPanel® 12mm & 24mm colour range - see page 6

## PANEL DIMENSIONS

2750mm (+/- 2mm) x 1100mm (+/- 2mm)

## PANEL THICKNESS

12mm | 0.47"

24mm | 0.94"

For additional specifications and performance details please visit [wovenimage.com](http://wovenimage.com)



PRECISION CUT DESIGNS

# ECHOPANEL® PALACE



EchoPanel® PALACE in colour 349

**COLOURS**

Full EchoPanel® 12mm & 24mm colour range - see page 6

**PANEL DIMENSIONS**

2750mm (+/- 2mm) x 1100mm (+/- 2mm)

**PANEL THICKNESS**

12mm | 0.47"  
24mm | 0.94"

For additional specifications and performance details please visit [wovenimage.com](https://www.wovenimage.com)

PRECISION CUT DESIGNS

# ECHOPANEL® EMPIRE

**COLOURS**

Full EchoPanel® 12mm & 24mm colour range - see page 6

**PANEL DIMENSIONS**

2750mm (+/- 2mm) x 1100mm (+/- 2mm)

**PANEL THICKNESS**

12mm | 0.47"

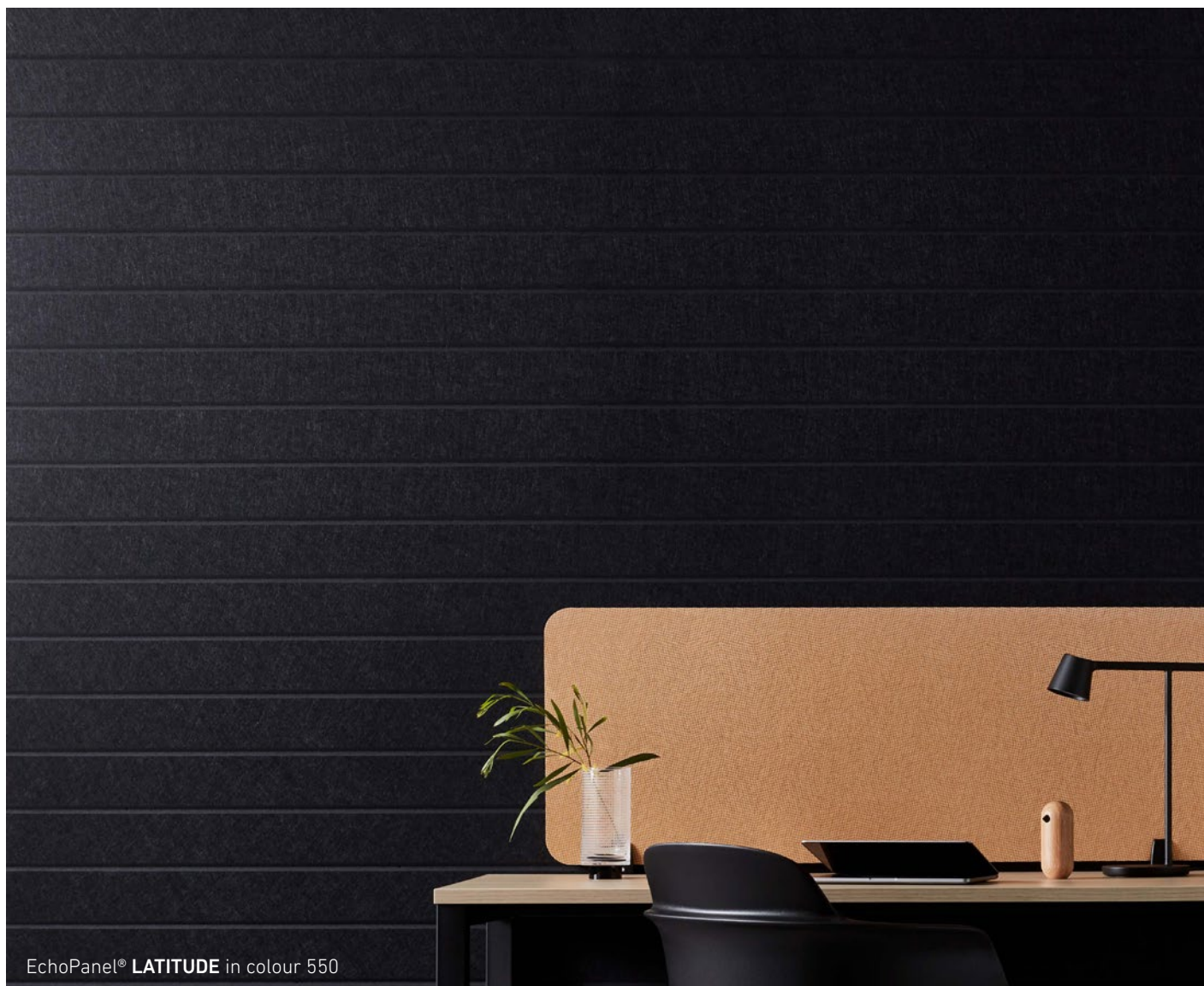
24mm | 0.94"

For additional specifications and performance details please visit [wovenimage.com](http://wovenimage.com)



PRECISION CUT DESIGNS

# ECHOPANEL® LATITUDE



EchoPanel® **LATITUDE** in colour 550

## COLOURS

Full EchoPanel® 12mm & 24mm colour range - see page 6

## PANEL DIMENSIONS

2750mm (+/- 2mm) x 1100mm (+/- 2mm)

## PANEL THICKNESS

12mm | 0.47"

24mm | 0.94"

For additional specifications and performance details please visit [wovenimage.com](https://wovenimage.com)

PRECISION CUT DESIGNS

# ECHOPANEL® LONGITUDE



EchoPanel® LONGITUDE in colour 269

## COLOURS

Full EchoPanel® 12mm & 24mm colour range - see page 6

## PANEL DIMENSIONS

2750mm (+/- 2mm) x 1100mm (+/- 2mm)

## PANEL THICKNESS

12mm | 0.47"

24mm | 0.94"

For additional specifications and performance details please visit [wovenimage.com](https://wovenimage.com)



## PRECISION CUT DESIGNS

ECHO PANEL<sup>®</sup> MERIDIAN

## COLOURS

Full EchoPanel<sup>®</sup> 12mm & 24mm colour range - see page 6

## PANEL DIMENSIONS

2750mm (+/- 2mm) x 1100mm (+/- 2mm)

## PANEL THICKNESS

12mm | 0.47"

24mm | 0.94"

For additional specifications and performance details please visit [wovenimage.com](https://www.wovenimage.com)

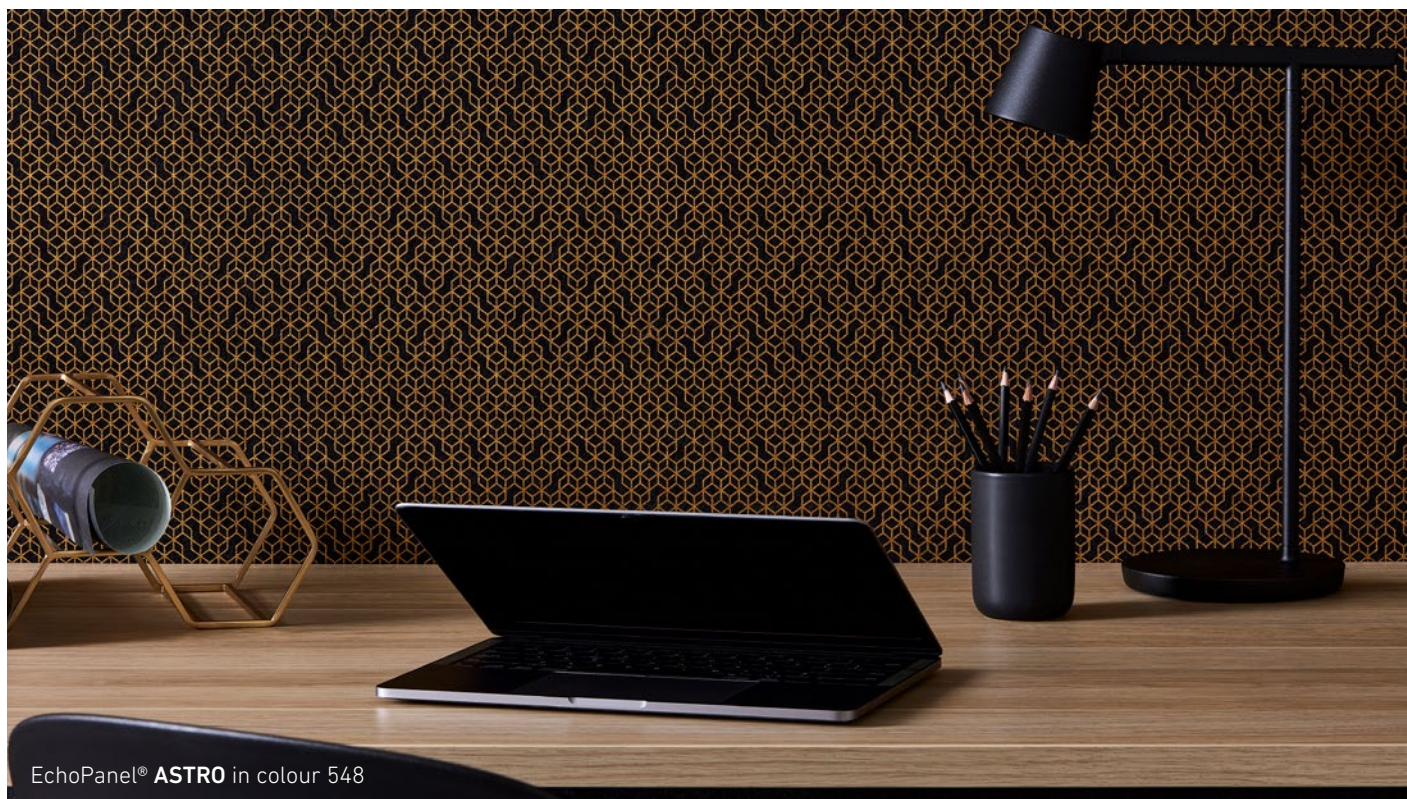


ECHOPANEL® COLLECTION

# PRINT DESIGNS



# ECHOPANEL® ASTRO



## PANEL DIMENSIONS

2800mm (+/- 10mm) x 1200mm (+/- 5mm)

## PANEL THICKNESS

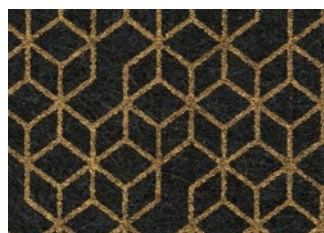
12mm (+/- 7%)

## PATTERN REPEAT

Horizontal 107mm, Vertical 173mm - pattern printed on both sides



907



548 (pearlescent ink)



270 (pearlescent ink)



489 (pearlescent ink)



462 (pearlescent ink)

For additional specifications and performance details please visit [wovenimage.com](http://wovenimage.com)

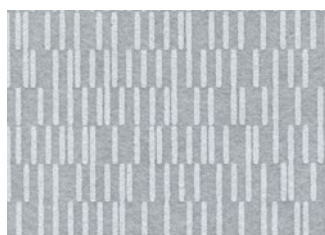


## PRINT DESIGNS

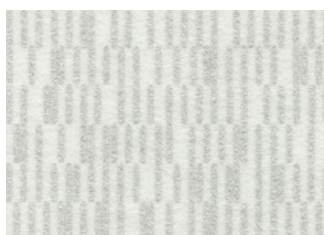
## ECHO PANEL® FREQUENCY



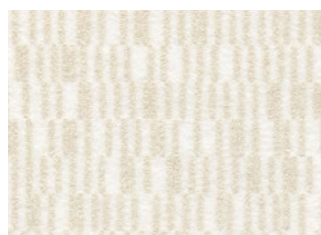
<b>PANEL DIMENSIONS</b>	2800mm (+/- 10mm) x 1200mm (+/- 5mm)
<b>PANEL THICKNESS</b>	12mm (+/- 7%)
<b>PATTERN REPEAT</b>	Horizontal 300mm, Vertical 320mm (half drop) - pattern printed on both sides



100



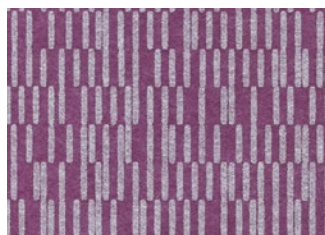
101 (pearlescent ink)



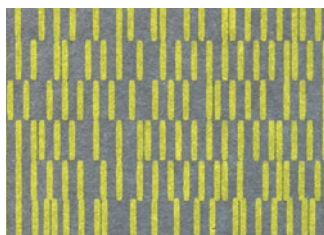
641 (pearlescent ink)



544 (pearlescent ink)



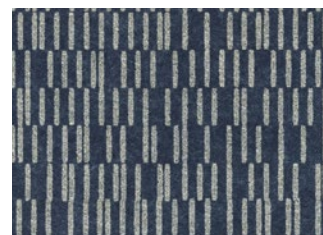
213 (pearlescent ink)



612



577



301 (pearlescent ink)

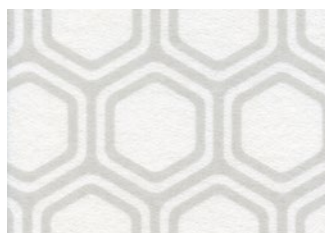
For additional specifications and performance details please visit [wovenimage.com](http://wovenimage.com)



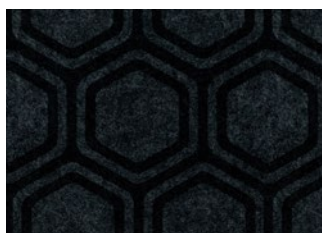
## PRINT DESIGNS

ECHO PANEL<sup>®</sup> HEXEchoPanel<sup>®</sup> HEX in colours 542 and 444

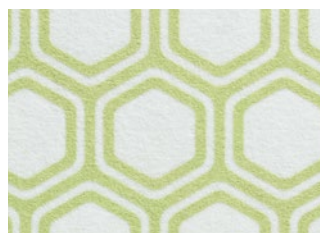
<b>PANEL DIMENSIONS</b>	2800mm (+/- 10mm) x 1200mm (+/- 5mm)
<b>PANEL THICKNESS</b>	12mm (+/- 7%)
<b>PATTERN REPEAT</b>	Horizontal 74mm, Vertical 130mm - pattern printed on both sides



444



542



111

For additional specifications and performance details please visit [wovenimage.com](http://wovenimage.com)

## PRINT DESIGNS

## ECHO PANEL® TILT



## PANEL DIMENSIONS

2800mm (+/- 10mm) x 1200mm (+/- 5mm)

## PANEL THICKNESS

12mm (+/- 7%)

## PATTERN REPEAT

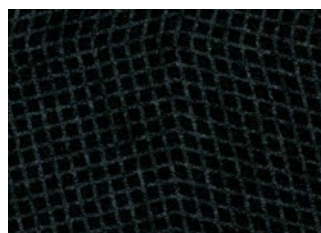
Horizontal 128mm, Vertical 128mm - pattern printed on both sides



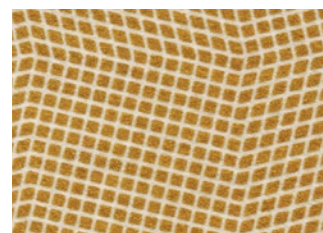
501



402



545

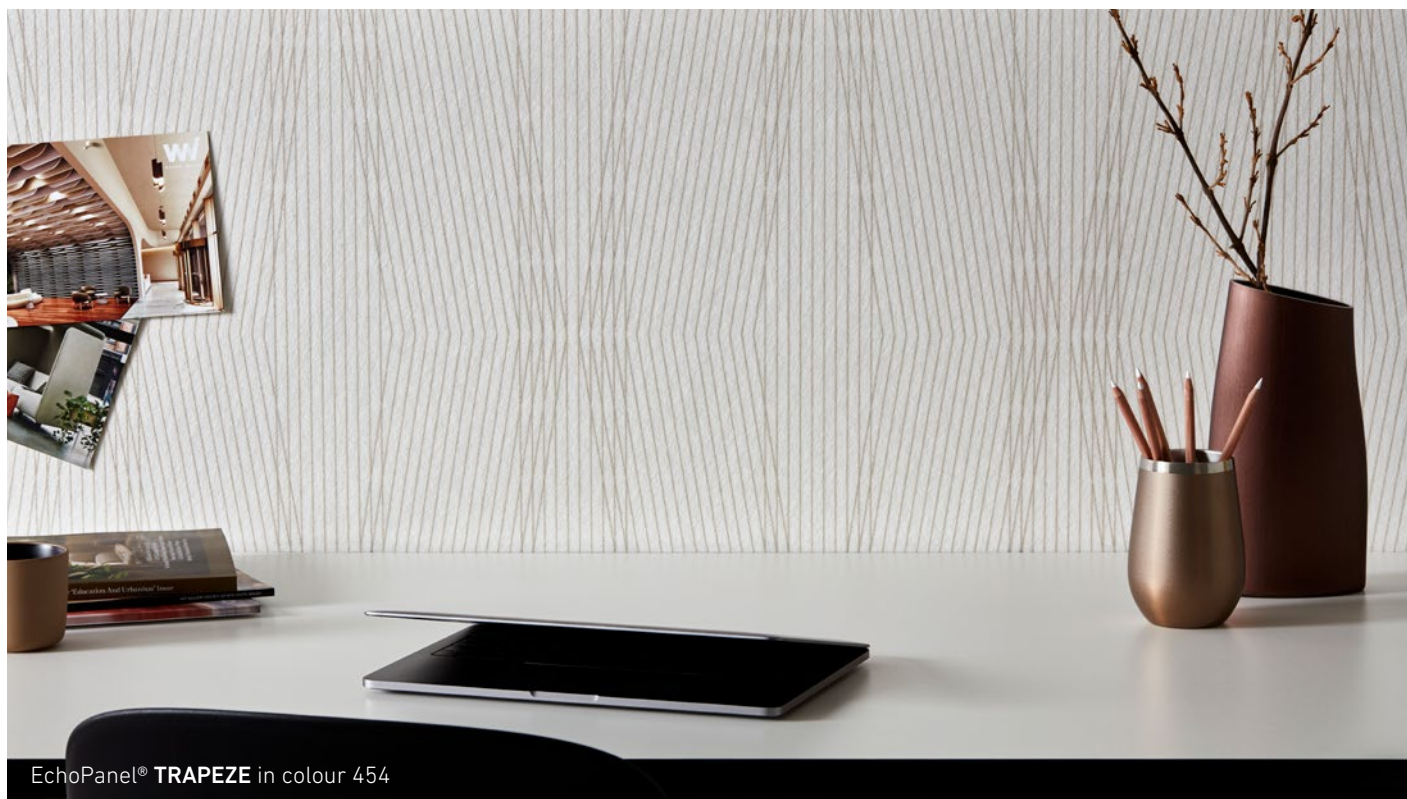


131 (pearlescent ink)

For additional specifications and performance details please visit [wovenimage.com](http://wovenimage.com)



## PRINT DESIGNS

ECHO PANEL<sup>®</sup> TRAPEZEEchoPanel<sup>®</sup> TRAPEZE in colour 454

## PANEL DIMENSIONS

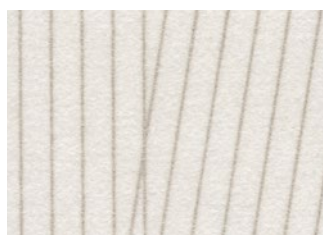
2800mm (+/- 10mm) x 1200mm (+/- 5mm)

## PANEL THICKNESS

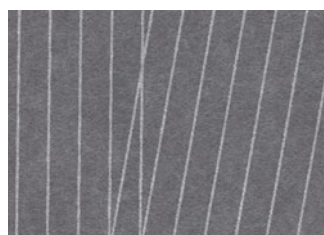
12mm (+/- 7%)

## PATTERN REPEAT

Horizontal 400mm, Vertical 590mm - pattern printed on both sides



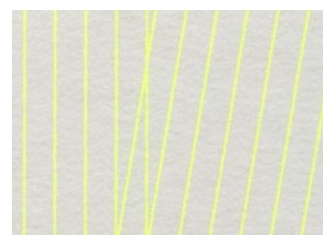
454 (pearlescent ink)



443



150 (fluorescent)

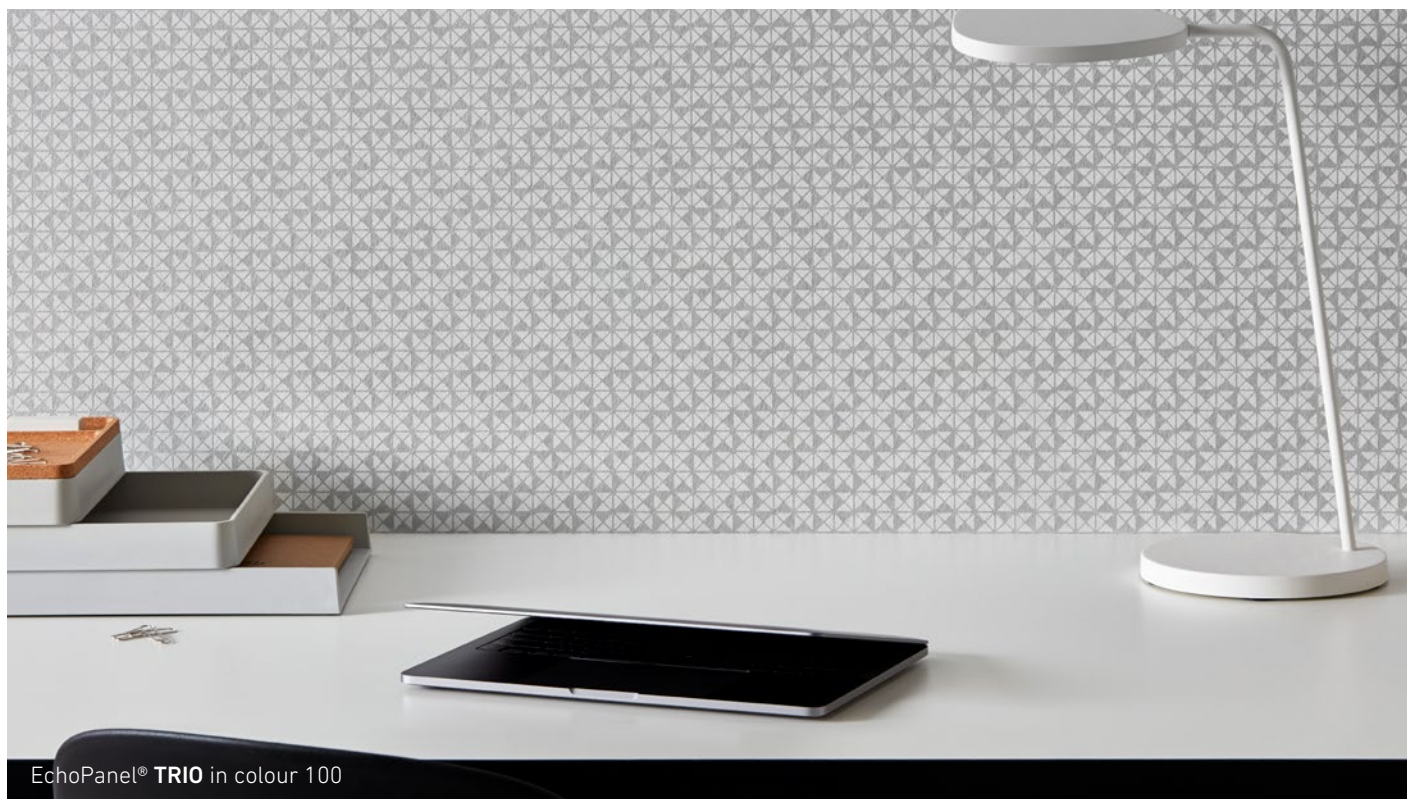


107 (fluorescent)

For additional specifications and performance details please visit [wovenimage.com](http://wovenimage.com)

## PRINT DESIGNS

## ECHOPANEL® TRIO



## PANEL DIMENSIONS

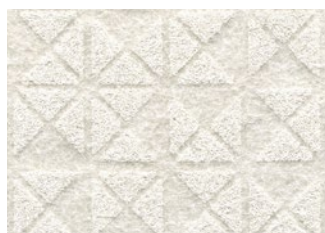
2800mm (+/- 10mm) x 1200mm (+/- 5mm)

## PANEL THICKNESS

12mm (+/- 7%)

## PATTERN REPEAT

Horizontal 65mm, Vertical 65mm - pattern printed on both sides



500



100



381



315 (pearlescent ink)



365 (pearlescent ink)

For additional specifications and performance details please visit [wovenimage.com](http://wovenimage.com)



# PRODUCT PORTFOLIO



# ARRAY CEILING SOLUTION



ARRAY in colours 500, 454, 908 & 468

Array is a design-led, fully scalable and easy to install acoustic ceiling solution from Woven Image. Choose from 9 beautifully crafted baffle designs, made using EchoPanel® in both 12mm and 24mm thicknesses. With a streamlined aluminum rail, Array allows for simple onsite tailoring and adjustment.

Delivering high acoustic performance ratings, Array helps to control reverberated noise in shared commercial spaces, including workplace, education and hospitality environments.

## Array hardware:



### ARRAY RAIL

2.5m long aluminium rail that holds Array baffles in place.



### SNAP COVERS

2.5m long aluminium profile, cut to size and snapped into the underside of Array rails to create spacing between Array baffles.



### END CAPS

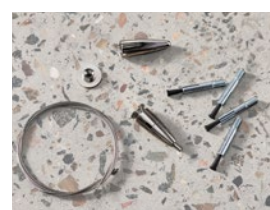
Screwed onto the end of a rail for a clean finish.

## Additional hardware:



### JOINER PLATE

To connect multiple rail runs for larger ceiling applications (Tek screws included).



### SUSPENSION KIT

There are two different types of suspension kit available to suspend the Array rail: soffit for concrete applications (shown here) and t-grid applications.

For additional specifications and performance details please visit [wovenimage.com](https://www.wovenimage.com)



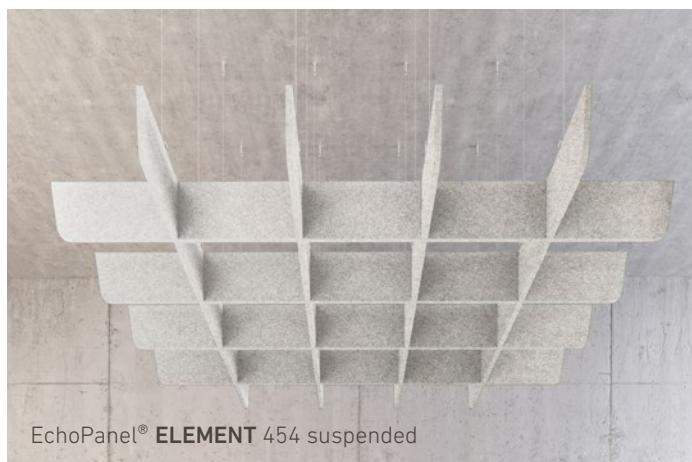
# ECHOPANEL® ELEMENT



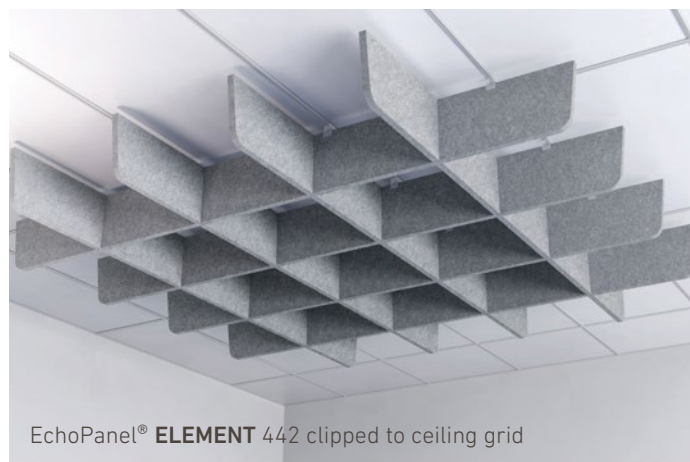
EchoPanel® **ELEMENT** in colour 542

EchoPanel® Element is a practical, design-led acoustic ceiling solution. It is easy to install, fixing directly to a ceiling or attaching to a ceiling grid using cleverly designed translucent clips for a completely seamless finish.

There is also the option to order a suspension kit solution, allowing EchoPanel® Element to appear to float, creating a design focus, as well as providing an acoustic baffle. There are 3 different colours available, all chosen to enhance a variety of contemporary commercial interior settings.



EchoPanel® **ELEMENT** 454 suspended



EchoPanel® **ELEMENT** 442 clipped to ceiling grid

For additional specifications and performance details please visit [wovenimage.com](http://wovenimage.com)

# PENDENTS & SCREENS



EchoPanel® **SUMMIT** pendants in colours 442 and 365

EchoPanel® Space Dividers allow designers to stylishly define areas within open-plan spaces, whilst delivering privacy and acoustic control. The range includes ceiling-suspended pendants and free-standing space dividers.

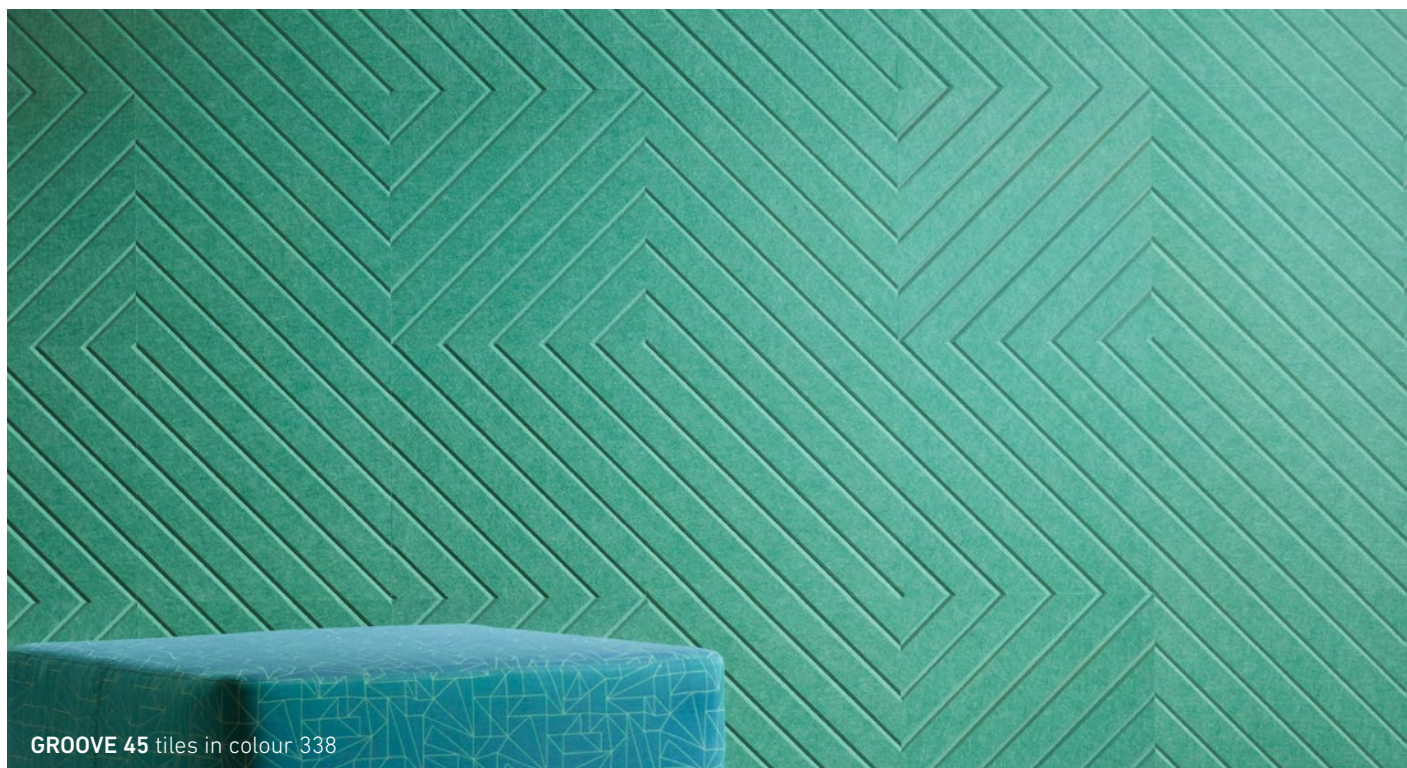


EchoPanel® **PLATOON** space dividers in colours 442 and 542 with charcoal joiners

For additional specifications and performance details please visit [wovenimage.com](http://wovenimage.com)

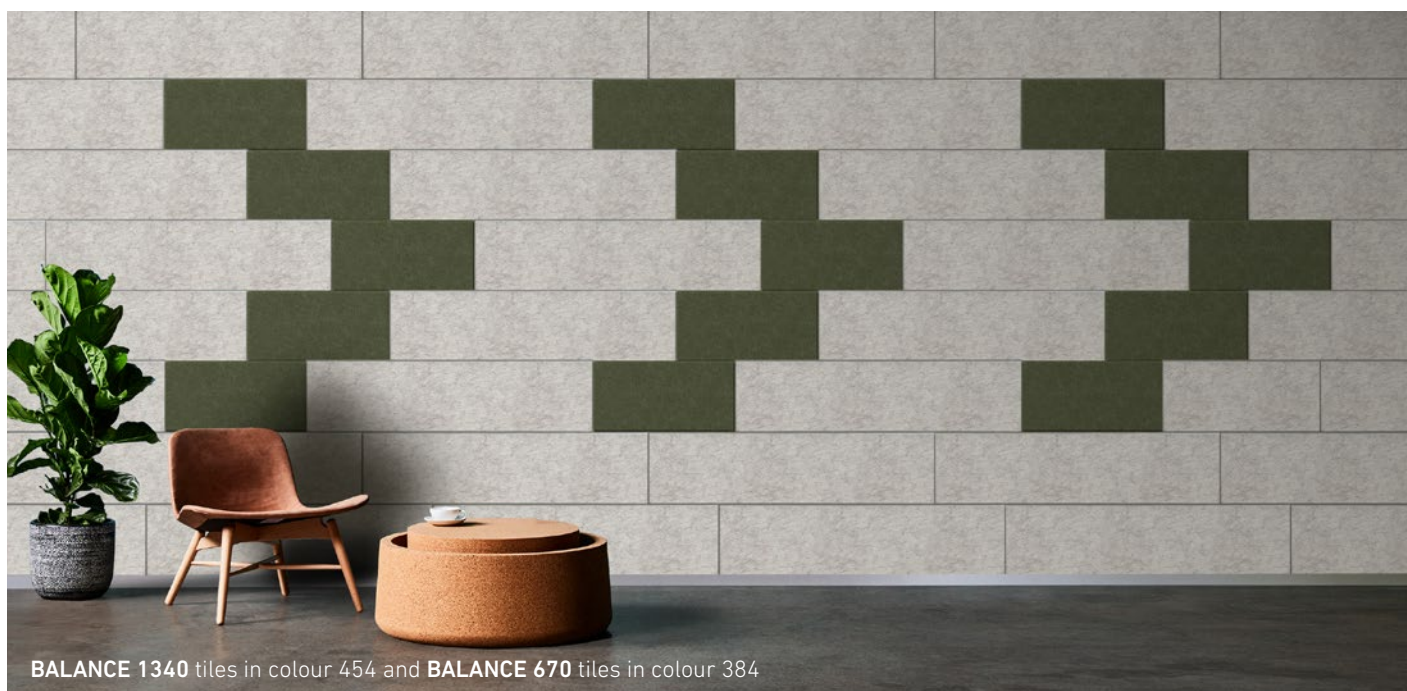


# ACOUSTIC TILES



**GROOVE 45** tiles in colour 338

Acoustic Tiles are the perfect product range for designers looking to achieve acoustic function with a quality design. The portfolio boasts an extensive range of solid colours and pattern-matched printed, cut and 3D formed tiles, providing an endless stream of design configurations.



**BALANCE 1340** tiles in colour 454 and **BALANCE 670** tiles in colour 384

For additional specifications and performance details please visit [wovenimage.com](http://wovenimage.com)



## ECHO PANEL® COLLECTION

## ECHO PANEL® ADAPT



EchoPanel® ADAPT CLASSIC screen  
in colour 454 with cream  
desk clamps

EchoPanel® Adapt workstation screens are available in two different sizes (Adapt Classic: 1790mm x 780mm and Adapt Social: 1790mm x 544mm). They are pinnable, provide privacy and assist in reducing reverberated noise in work spaces. Choose from 3 colours in the EchoPanel® 24mm range.

They are easy to install using our unique desk clamps which are available in charcoal (542) and cream (908) colours.



EchoPanel® ADAPT SOCIAL in colour 542 with charcoal desk clamps

For additional specifications and performance details please visit [wovenimage.com](http://wovenimage.com)





WOVEN IMAGE®