



whiteboards  
and pinboards

Groove

● Custom Groove  
in Pavilion

● Jarden Commercial Bay,  
New Zealand





## A dash of personality

Groove is a customisation tool; a series of precise, angular cuts designed to tactfully bend and distort light. From subtle patterns to hinges and joins for 3D sculptures, our Groove customisation allows you to explore the realms of possibility within the world of acoustic panels—adding depth, nuance, and texture to interior spaces.

To find out more about Groove  
visit [www.autexglobal.com](http://www.autexglobal.com)





#### Features and benefits

- Six pattern suggestions
- Endless customisation options
- Available on both 12 mm and 24 mm Cube™ panels
- Five angles (30° standard angle)
- Peel 'n' Stick backing
- Bevelled edge for consistent joins

#### Applications

- Decorative customisation for ceilings and walls in interior spaces

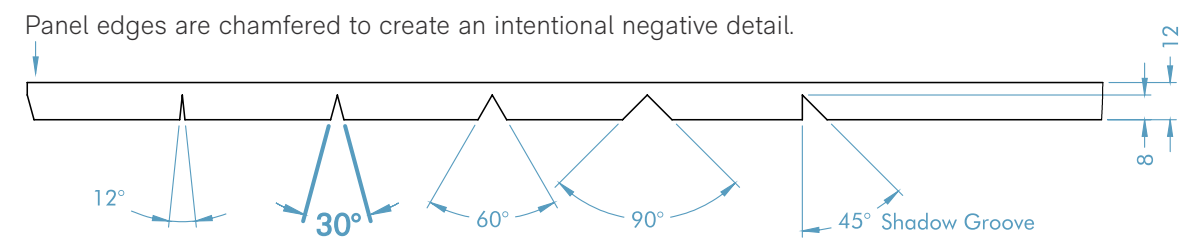




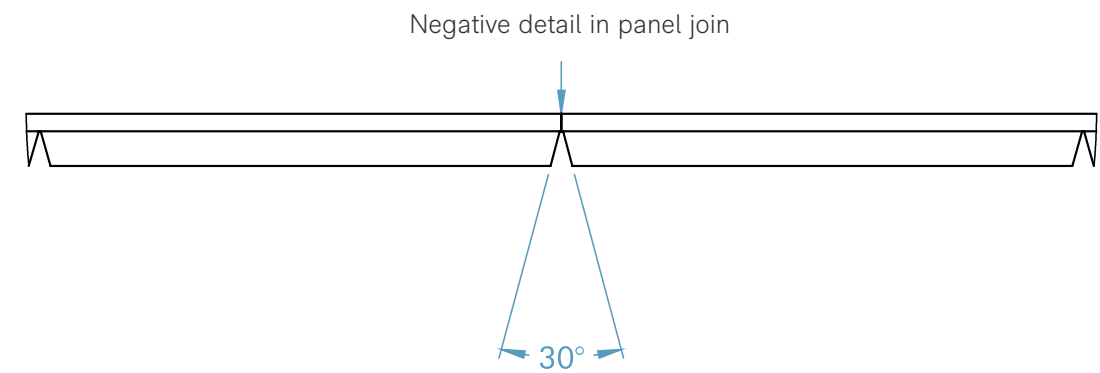
## Detail options

Groove offers a selection of five angled cuts, each used to create a different pattern style and finish. Our standard angle is 30°, however you can choose from any of the five angles when specifying.

### Groove details



### Panel join details

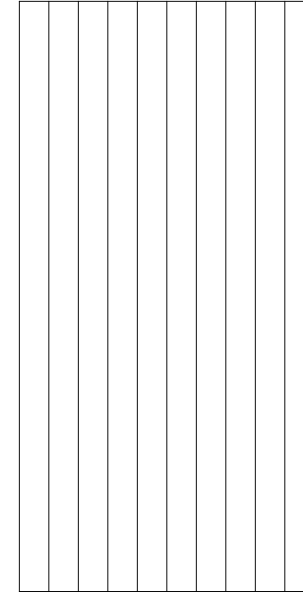




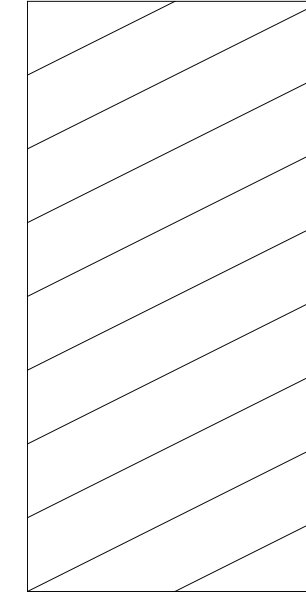


## Pattern suggestions

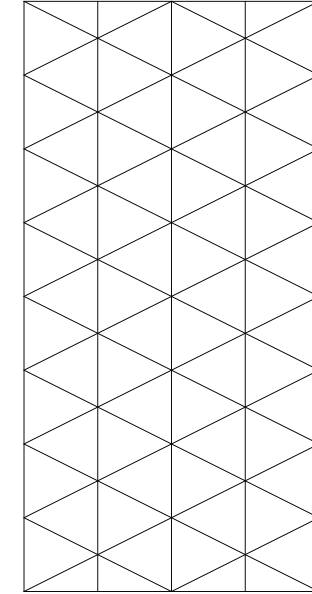
Choose from our range of pattern suggestions, or create your own bespoke design.



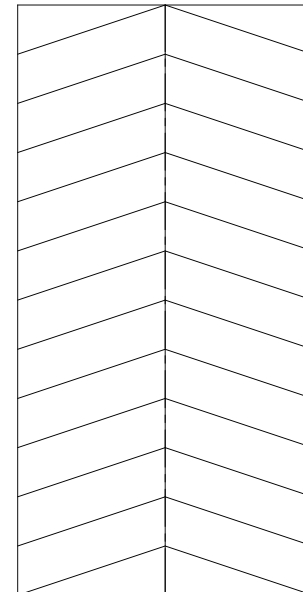
V1



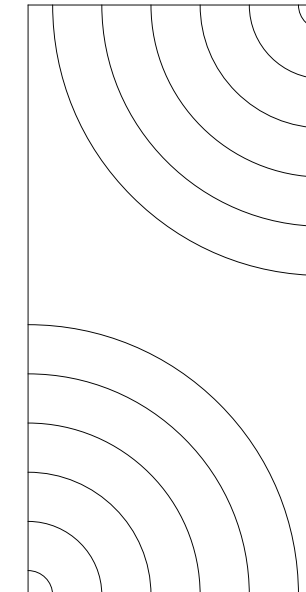
V2



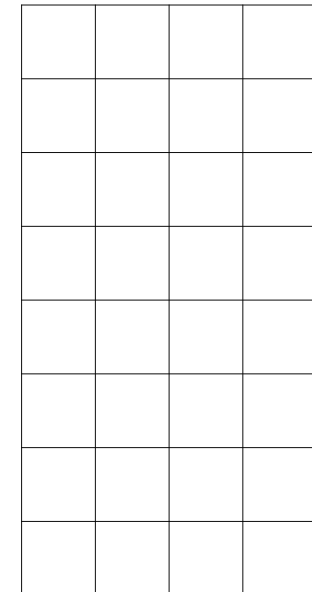
V3



V4



V5

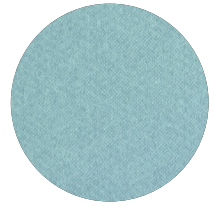


V6

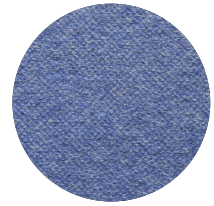
For information on spacing measurements between grooves please contact your account manager.



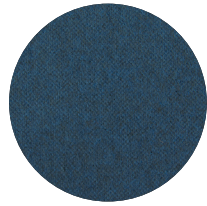
# Colour options



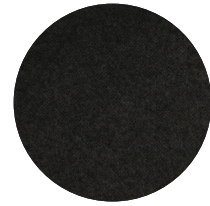
Falling Water



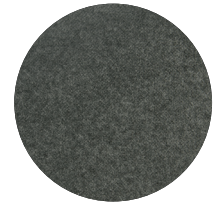
Galaxy



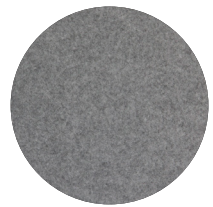
Pinnacle



Petronas



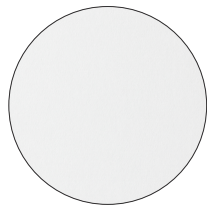
Empire



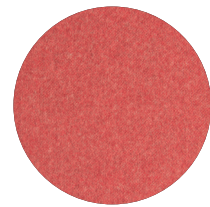
Flatiron



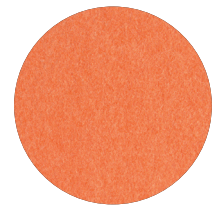
Savoye



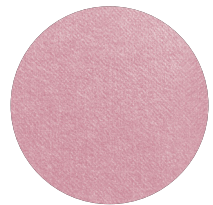
Pavilion



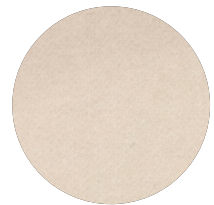
Ironbank



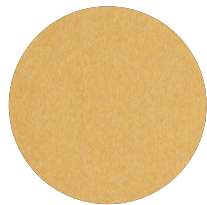
Zenith



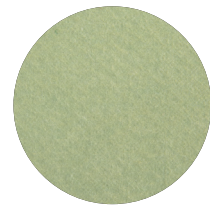
Rosada



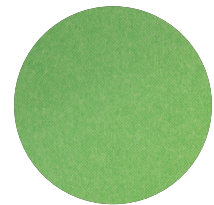
Opera



Senado



Acros



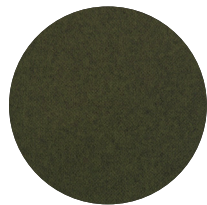
Bosco



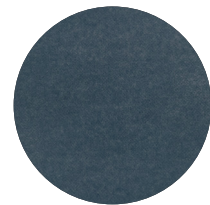
Lotus



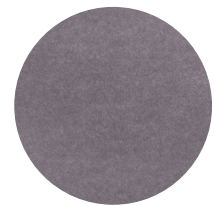
Tree House



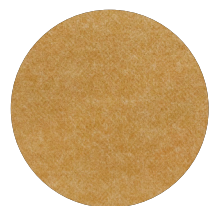
Gherkin



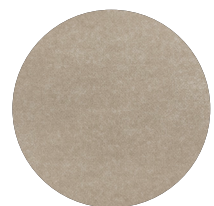
Muralla



Cavalier



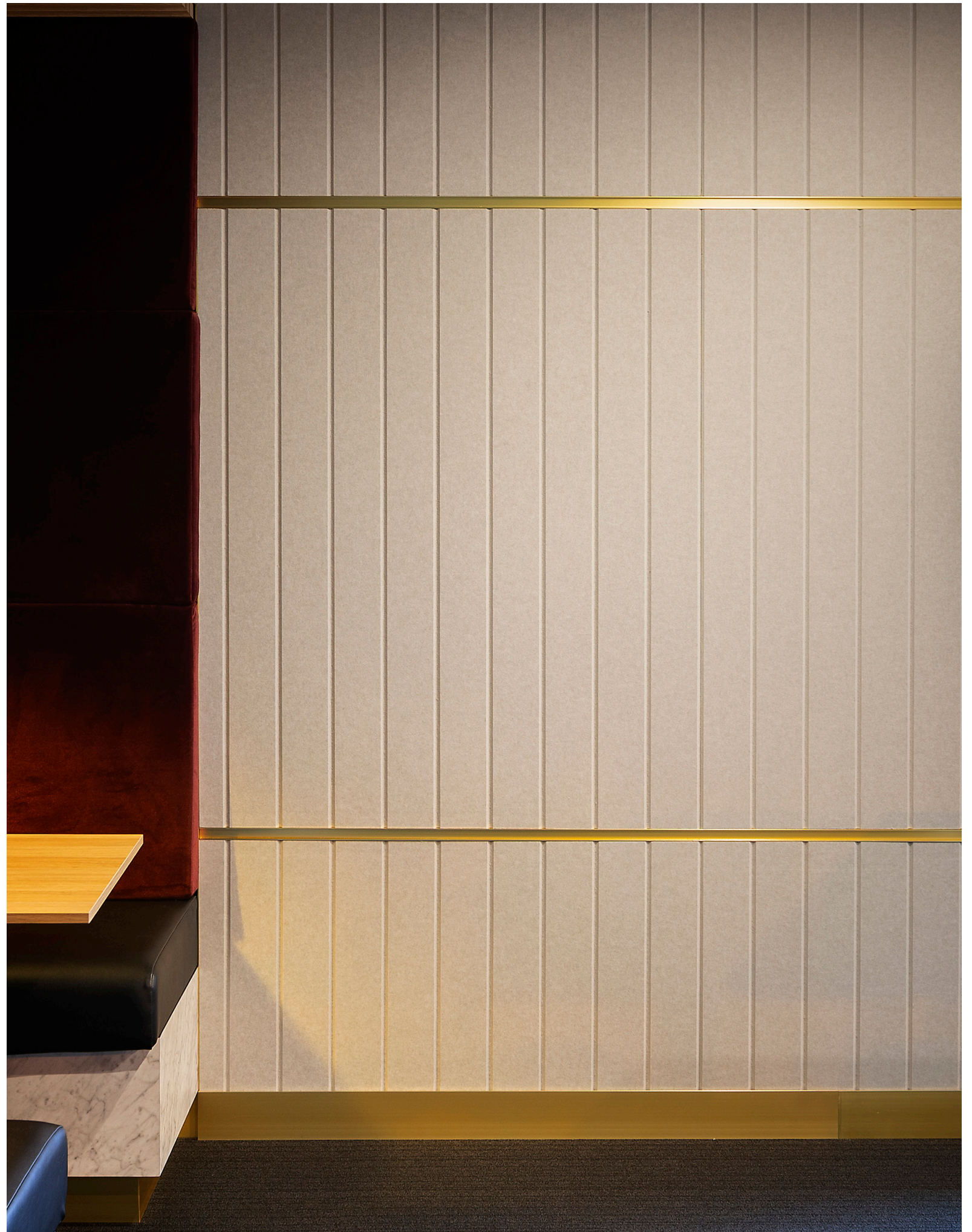
Beehive



Parthenon



Sargazo



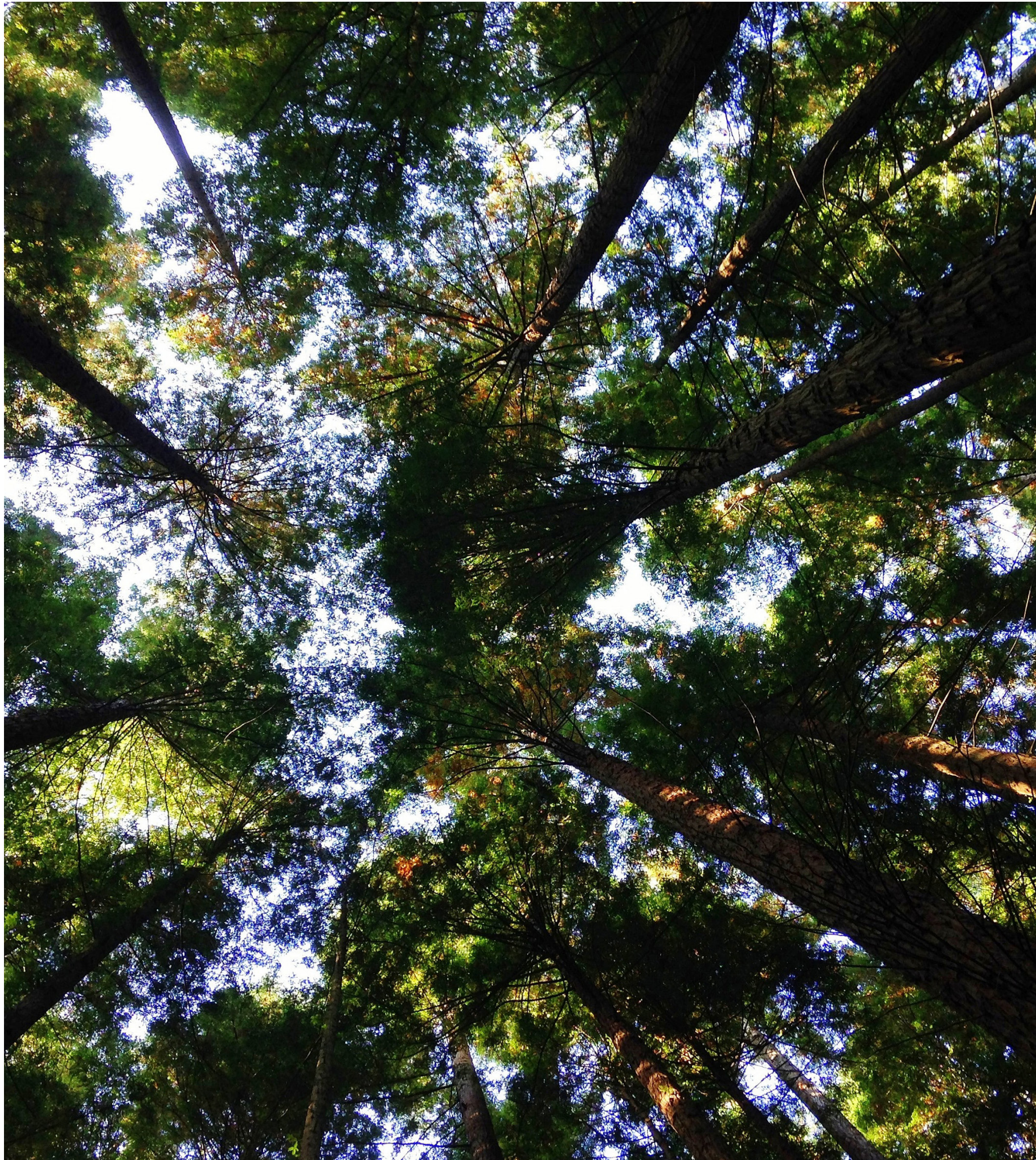


## Customisation

As creators and innovators, we understand your pursuit of the bold and unusual, the rare and exceptional—the brave, colour-outside-the-lines ideas. Every space you design is unique, therefore, every element— from floor to ceiling—should be tailored to fit. With five different degrees of v-groove—12°, 30°, 45°, 60°, and 90°—the clean, precise cuts can create anything from subtle patterns to 3D sculptures. For details on how to specify custom Groove, refer to the Groove Information Sheet.







## Caring for the environment

Cube is manufactured using 100% polyester fibre and contains a minimum of 60% recycled fibre (from PET plastics). Our products are designed to be recycled at the end of their life too.

We have continual improvement programmes in which we implement a range of initiatives to mitigate the environmental 'hotspots' that we have identified. Our products are GreenRate Level A, Health Product Declaration (HPD), and CDHP Standard certified.

Cube is DeclareSM certified to be Red List free and can be used in Living Building Challenge projects. Autex has a high functioning Environmental Management System (ISO 14001) to enhance our environmental performance and contribute to sustainable development.



Declare.





